

2011 Market Rate Study

Final Report

Kentucky Partnership for Early Childhood
Services, Human Development Institute

Prepared by:

Beth Rous
Patti Singleton
Kim Hooks
Amy Booth
Tami Gross

SFY 2011

2011 Kentucky Market Rate Study

The Kentucky Partnership for Early Childhood Services is a multi-project consortium housed at the University of Kentucky, Human Development Institute. The partnership's goal is to provide research, training and outreach to support and enhance quality early care, intervention and education. Services are provided through a variety of state and national grants and contracts.

The Child Care Network - they: help parents find child care; support families to raise healthy children; build the supply of child care; improve the quality of child care; bridge child care and education; document child care needs and trends; engage new partners, and tell the child care story.

www.kentuckypartnership.org/mrs

This report was developed in part with Child Care Block Grant funds through a contract to the Human Development Institute from the Kentucky Cabinet for Health and Family Services, Division of Child Care (Contract Number P02 736 0800015971 1). Additional copies of this report are available by request.

Recommended Citation:

Rous, B., Singleton, P., Hooks, K., & Booth, A., Gross, T. (2011). *Kentucky's 2011 child care market rate study*. Lexington, KY: Human Development Institute, University of Kentucky

An Equal Opportunity Employer M/F/H



Table of Contents

List of Tables	5
List of Appendix Tables	7
List of Figures	7
Overview	9
Data Sources	9
Definitions.....	9
Methods.....	10
Sample.....	10
Survey Instrument.....	10
Participants	11
Sampling Procedure for Registered Providers	12
Data Entry Procedures	13
Data Analyses.....	14
Length of Care.....	14
Results.....	15
Statewide Rates.	15
Percentile Ranges.....	15
Regional Rates.....	16
Regional Trends.....	17
Child Care Rates by Urban/Rural Designation	18
Subsidy Participation.....	21
Current Subsidy Payment Rates.....	24
High Percent Subsidy.	26

2011 Kentucky Child Care Market Rate Study

STAR Rating..... 28

Non-Traditional Hours..... 30

Children with Disabilities..... 32

Diverse Population..... 33

Limitations..... 34

Recommendations..... 34

Appendices..... 35

 Appendix 1: Copy of Paper Survey..... 36

 Appendix 2: Copy of Online Survey..... 39

 Appendix 3: Additional Tables..... 45

 Appendix 4: Figures..... 60

List of Tables

Table 1. Survey Population.....	11
Table 2. Survey Population and Response Rate	11
Table 3. Survey Responses by Region and Method (Percent and Number)	12
Table 4. Total Population of Registered Providers (n = 1620).....	12
Table 5. Statewide Child Care Rate Trend, 2005-2009 (75th Percentile).....	15
Table 6. Statewide Child Care Ranges Full and Part-Time by Age Category (65th to 75th Percentile)...	15
Table 7. Statewide Child Care Rate Ranges Full and Part-Time by Facility Type and Age Category (65th to 75th Percentile)	16
Table 8. Regional County Designation.....	16
Table 9. Statewide Child Care Rate by Region (75th Percentile)	17
Table 10. Statewide Child Care Rate by Region, Full-Time Rates (75th Percentile).....	17
Table 11. Statewide Child Care Rate by Region, Part-Time Rates (75th Percentile).....	18
Table 12. Urban/Rural County Designation	18
Table 13. Statewide Child Care Rate by Urban/Rural Designation (75th Percentile)	19
Table 14. Child Care Rates Trend by Urban/Rural Designation (75th Percentile)	19
Table 15. Statewide Child Care Rate Ranges Urban/Rural Designation (65th to 75th Percentile).....	20
Table 16. Statewide Child Care Rate Trend by Urban/Rural Designation (75th Percentile).....	20
Table 17. Percent (and number) Statewide Subsidy Acceptance	21
Table 18. Children Receiving Subsidy (Percent and Number of children in child care)	21
Table 19. Statewide Subsidy Rates, All Facility Types	22
Table 20. Full-Time Statewide Child Care Rate, by Subsidy Participation, Region (75th Percentile)	22
Table 21. Part-Time Statewide Child Care Rate by Subsidy Participation, Region (75th Percentile)	23
Table 22. Child Care Rates by Subsidy Participation and Urbanicity (75th Percentile).....	23
Table 23. Percent (and number) of facilities whose rates are less than or equal to the current maximum payment.....	25

2011 Kentucky Child Care Market Rate Study

Table 24.	Facilities with High Percent Subsidy (Percent and Number)	26
Table 25.	Full-Time Child Care Rates Facilities by Percent Subsidy Enrollment (75th Percentile).....	26
Table 26.	Part-Time Child Care Rates Facilities by Percent Subsidy Enrollment (75th Percentile).....	27
Table 27.	STAR Rated Facilities (All Levels)	28
Table 28.	Percent (and number) of STAR Rated Facilities by Region	28
Table 29.	STAR Rated Facilities by Level	28
Table 30.	Statewide Child Care Rates by STARS Participation (75th Percentile)	29
Table 31.	Full-Time Child Care Rates by STARS Participation (75th Percentile).....	29
Table 32.	Part-Time Child Care Rates by STARS Participation (75th Percentile).....	29
Table 33.	Facilities who Accept Subsidy and are STAR Rated (Percent and Number).....	30
Table 34.	Facilities with Non-Traditional Hours (Percent and Number)	30
Table 35.	Full-Time Child Care Rates by Non-Traditional Hours (75th Percentile).....	31
Table 36.	Part-Time Child Care Rates by Non-Traditional Hours (75th Percentile).....	31
Table 37.	Percent (and number) of Facilities Currently Serving Children with Disabilities.....	32
Table 38.	Percent and Number of Children with Disabilities by Age.....	32
Table 39.	Facilities Currently Serving a Diverse Population (Percent and Number)	33
Table 40.	Percent and Number of Diverse Children by Age	33

List of Appendix Tables

Table A.1.	STAR and Subsidy Participation Full-Time Rates (75th Percentile).....	45
Table A. 2.	STAR and Subsidy Participation Part-Time Rates (75th Percentile).....	46
Table A. 3.	Child Care Rate Range by Region, Urbanicity and Facility Type - 65th to 75th Percentile .	47
Table A. 4.	Child Care Enrollment and Desired Capacity - Statewide.....	52
Table A. 5.	Rates by Area Development District (75 th Percentile).....	53
Table A. 6.	Rates by Area Development District and STAR Rated (75 th Percentile).....	54
Table A. 7.	Rates by Area Development District and STAR Rated (75 th Percentile) (continued).....	55
Table A. 8.	Rates by Area Development District and STAR Rated (75 th Percentile) (continued).....	56
Table A. 9.	Rates by Area Development District and Subsidy Acceptance (75 th Percentile)	57
Table A. 10.	Rates by Area Development District and Subsidy Acceptance (75 th Percentile) (continued) 58	
Table A. 11.	Rates by Area Development District and Subsidy Acceptance (75 th Percentile) (continued) 59	

List of Figures

Figure 1.	Percent Statewide Subsidy Acceptance 2007 to 2011.....	21
Figure 2.	Type I Infant/Toddler Trend 2005-2009, Full-Time Rates (75th Percentile).....	60
Figure 3.	Type I Preschool Trend 2005-2009, Full-Time Rates (75th Percentile).....	60
Figure 4.	Type I School-Age Trend 2005-2009, Full-Time Rates (75th Percentile)	61
Figure 5.	Type II Infant/Toddler Trend 2005-2009, Full-Time Rates (75 th Percentile).....	61
Figure 6.	Type II Preschool Trend 2005-2009, Full-Time Rates (75 th Percentile).....	62
Figure 7.	Type II School-Age Trend 2005-2009, Full-Time Rates (75th Percentile)	62
Figure 8.	Certified Home Infant/Toddler Trend 2005-2009, Full-Time Rates (75 th Percentile)	63

Figure 9. Certified Home Preschool Trend 2005-2009, Full-Time Rates (75th Percentile)..... 63

Figure 10. Certified Home School-Age Trend 2005-2009, Full-Time Rates (75th Percentile) 64

Figure 11. Type I Infant/Toddler Trend 2005-2009, Part-Time Rates (75th Percentile) 64

Figure 12. Type I Preschool Trend 2005-2009, Part-Time Rates (75th Percentile)..... 65

Figure 13. Type I School-Age Trend 2005-2009, Part-Time Rates (75th Percentile)..... 65

Figure 14. Type II Infant/Toddler Trend 2005-2009, Part-Time Rates (75th Percentile) 66

Figure 15. Type II Preschool Trend 2005-2009, Part-Time Rates (75th Percentile)..... 66

Figure 16. Type II School-Age Trend 2005-2009, Part-Time Rates (75th Percentile)..... 67

Figure 17. Certified Home Infant/Toddler Trend 2005-2009, Part-Time Rates (75th Percentile) 67

Figure 18. Certified Home Preschool Trend 2005-2009, Part-Time Rates (75th Percentile) 68

Figure 19. Certified Home School-Age Trend 2005-2009, Part-Time Rates (75th Percentile)..... 68

Overview

The 2011 Kentucky Child Care Market Rate Study was conducted by the Kentucky Partnership for Early Childhood Services in collaboration with the Division of Child Care, the Division of Regulated Care, The Child Care Network, and the Quality Enhancement Initiative.

Data Sources

The Division of Regulated Child Care (DRCC) coordinates licensure of child-caring facilities across the Commonwealth. DRCC maintains an electronic list of currently licensed child care facilities and certified child care homes. This list is available online at <http://chfs.ky.gov/os/oig/drcc.htm>.

ECE-TRIS (Early Care and Education Training Records Information System) is a database to store and maintain professional development and training records for early care and education professionals in Kentucky. Data collected includes personnel information for licensed and certified homes. At the time of this report, ECE-TRIS maintained active records for 2,940 licensed or certified facilities and 53,778 Early Care and Education (ECE) professionals.

Definitions

For this report, the following definitions apply. **Capacity** is the number of children in a child care facility. **Licensed capacity** is the maximum number of children allowed by state child care licensing standards. **Desired capacity** represents the number of children for which a child care facility indicated they would like to provide care.

A **facility** is any licensed child care provider or home which provides care to children, infant to school age (6 weeks to age 12 for typically developing children; age 18 for children with disabilities). Kentucky's definitions of licensed Type I, Type II, Certified Homes and Registered Providers are available online <http://chfs.ky.gov/os/oig/drcc.htm>.

A **price** or **rate** is the fee a facility charges for services, including providing care for children.

Subsidy is the state child care assistance program, designed to provide access to quality child care to allow parents to work, attend education and training programs and/or participate in the Kentucky Temporary Assistance Program (K-TAP). In Kentucky, the program is known as CCAP, Child Care Assistance Program. Information on the Child Care Assistance Program can be found online <http://chfs.ky.gov/dcbs/dcc/ccap.html>.

Urbanicity as defined in 922 KAR 2:160: Child Care Assistance Program per Section 1: (18) "Nonurban" means a county without a first, second, or third class city as specified in KRS 81.010(1) through (3) and (30) "Urban" means a county listed in KRS 81.010(1) through (3) as having a first, second, or third class city.

Methods

Sample

The 2011 Kentucky Child Care Market Rate Survey was a population survey of all licensed and certified child care facilities in Kentucky. A list of child care facilities and homes was created via the official licensing and certified lists provided by the Kentucky Division of Regulated Child Care (DRCC). Email addresses were provided by the Early Care and Education Training Records Information System (ECE-TRIS), the state's training registry for licensed and certified homes.

Survey Instrument

The design of the survey form took into consideration recommendations from the *Market Rate Study Guidebook: A Guide To Implementing A Child Care Market Rate Study Using Child Care Resource And Referral Data* (Grobe, Weber et al., 2003). The survey for the 2011 market rate included several changes from previous versions used for data collection.

- Child Demographics - For each age group (infant, toddler, preschooler, school-age), facilities were asked to indicate the number of children served in several demographic categories (disabilities, ethnicity, English Proficiency).
- Staff Information - Facilities were asked to indicate the number of staff who had completed the Child Development Associate (CDA).

Data Collection Procedures

Two methods were used for data collection of Market Rate information: web-based survey and hard copy survey. Child care facilities were contacted in two ways: e-mail and regular postal mail. For both methods, a cover letter signed (or e-signed) by Mary Beth Jackson, Director of the Division of Child Care and Beth Rous, Director of the Kentucky Partnership for Early Childhood Services was provided. The cover letter also contained the web address for the Market Rate Survey webpage, www.kentuckypartnership.org/mrs where the survey could be completed online.

For e-mail contacts, using the compiled list of child care facilities and homes, an email was sent to those for whom email addresses were available (Group 1). If the email message was returned due to an invalid email address, or the facility did not respond after two attempts, secondary email addresses were used if available. The email provided a direct link to the online survey. Additionally, respondents were able to download a paper form of the survey if preferred. Return mail information was provided on the paper version. Copies of both forms of the survey are provided in the Appendix.

Three weeks after the online survey was made available, a mailing went to all child care facilities and homes who had not responded to the online survey, those who had an incorrect secondary email address, or for which no email address was available (Group 2). The Market Rate Survey Packet included the cover letter (described above), a paper survey with demographic information completed (i.e.,

Facility Name, License Number, Facility Type (Type I, II or Certified Home), Address, Director's Name), and a postage paid business reply envelope. Standard survey procedures (Dillman, 2009) were applied including a postcard reminder two weeks after the initial mailing for non-responders, and a second complete mailing after an additional 6 weeks to non-responders of either email or paper survey (Group 3). A third complete mailing was sent 8 weeks after the second for non-responders (Group 4). Table 1 describes these groups.

Table 1. Survey Population

	Number of Facilities
Group 1: Email	1432
Group 2: Mail Paper Survey	1598
Group 3: Reminder Mail Paper Survey	1079
Group 4: Second Reminder Mail Paper Survey	934

To increase participation in the survey, a random drawing for incentives was offered to all child care facilities and homes completing the survey. Through this process, a total of 17 child care facilities, certified homes, and registered providers received a package of early childhood materials worth up to \$50. Incentives were mailed after the market rate survey data collection was completed.

Participants

The 2011 Market Rate Study sample consisted of the population of licensed and certified child care facilities. The original list of child care facilities included 2,944 licensed and certified facilities. Of those, 34 surveys were returned due to an invalid address (could not be verified by other means) and 94 facilities indicated they were closed. This resulted in an adjusted population of 2,816 facilities, the total from which the response rate was calculated. From this adjusted population, 1,842 facilities responded to the survey, for a response rate of 65%. This response rate was consistent with the 2009 Market Rate Survey. Approximately one-third of participants completed the survey online (30%) with the remaining 70% completing paper surveys. Table 2 provides information on the survey population and response rate.

Table 2. Survey Population and Response Rate

Population	2,944
Invalid Address	34
Closed	94
Adjusted Population	2,816
Opted-Out (Refused)	20
No Response	954
Sample	1,842 (65%)
Online Responses	555 (30%)
Paper Data Entry	1,287 (70%)

Table 3. Survey Responses by Region and Method (Percent and Number)

	Total		Type I		Type II		Certified Home	
	Online	Paper	Online	Paper	Online	Paper	Online	Paper
Statewide	30.1 (555)	69.9 (1287)	30.9 (453)	69.1 (1013)	25.0 (21)	75.0 (63)	27.7 (81)	72.3 (211)
East	27.1 (68)	72.9 (183)	29.4 (57)	70.6 (137)	13.3 (2)	86.7 (13)	21.4 (9)	78.6 (33)
Central	31.1 (348)	68.9 (771)	31.2 (277)	68.8 (610)	26.1 (12)	73.9 (34)	31.7 (59)	68.3 (127)
West	29.4 (139)	70.6 (333)	30.9 (119)	69.1 (266)	30.4 (7)	69.6 (16)	20.3 (13)	79.7 (51)

Sampling Procedure for Registered Providers

The literature for state market rate studies recommends all child care providers be contacted and included in the process of determining the market rate. Currently, states are required to include regulated facilities in these studies. In Kentucky, this includes all licensed and certified child care facilities/homes. However, another category of providers, registered, non-licensed providers make up a significant portion of the child care options in the state (35%). Because these providers offer a large percentage of the state's childcare, in 2009 Kentucky began to attempt to gather data from the registered provider population. A sampling frame was created based on percentages of providers across the three geographic regions based on county.

Table 4 provides information on all registered providers in the state by geographic designation.

Table 4. Total Population of Registered Providers (n = 1620)

	Number
Total Population	1620
Registered Provider Sample with Email	230
Returned Surveys	8

Due to the low response, the registered provider data were not used in analysis. Future market rate studies should plan to invest additional resources to reach these providers.

Data Entry Procedures

Data collected using the online survey were downloaded for cleaning. Four spreadsheets were exported, based on child care facility or home license type (Type I, Type II, Certified Homes, and Registered Provider). Due to the low response of registered providers, the survey information was saved, but not used in analysis.

The license ID's were updated using the most recent version of the DRCC licensed facility and certified home list. Where the license number was unknown, missing, or invalid, the number was obtained through the DRCC spreadsheet. Once the list was final, a random check of 25% of license numbers was conducted to ensure accuracy; 100% of the facilities checked had a correct license number entered.

As paper surveys were returned, data were scanned into Cardiff Teleform[®], a data capture software. Once scanned, all responses were verified by staff. If unclear, responses were checked against the original survey. If still unclear, the facility was contacted. Once scanned and verified, responses were converted to Microsoft Excel and then SPSS 17.0 for analysis.

Descriptive statistics and frequency tables were generated on all variables to identify inconsistencies within the data (i.e., outliers, typos, and extreme skewness). For nominal variables, all data incorrectly categorized were investigated and the correct category entered. Interval and ratio variables were investigated for outliers. In cases where responses included extreme outliers for the child care market rate variables (+ or – 3 SD), raw data were verified.

High prices were examined and decision criteria for recoding price data established. These criteria were used when cleaning online data and as paper survey data were scanned.

1. If two prices were provided for the same age group, the higher price was used.
2. If two timeframes for rates were provided, the priority was given to daily, weekly, hourly then monthly rates.
3. If an annual charge was provided, the charge was divided by 12 and the monthly charge was used. If a 9- or 10-month charge was provided, the charge was divided by the number of months and the monthly charge was used.
4. If a bi-weekly charge was provided, the charge was divided by 2 and the weekly charge was used.
5. If the facility entered 0 (zero) for the price and there a timeframe for rates was not provided, the 0 was deleted and the field considered missing.

Data related to the number of children enrolled, empty slots and number of children receiving subsidy were examined and decision criteria for recoding number of children established. These criteria were used when cleaning the online data and as paper survey data were entered.

1. If text answer was provided and no determination as to the actual number was provided, field was left blank and considered missing (e.g., No Limit).

2. If in subsidy fields the facility responded “all”, the number of children currently enrolled was used.

All data were then combined and converted to SPSS. Upon conversion to an SPSS format, the data were cleaned based on licensing numbers and program characteristics.

Data Analyses

All data were analyzed using the Statistical Package for the Social Sciences (SPSS®) Version 17. In order to conduct a comprehensive examination of the variables that may affect the market rate, preliminary analyses were conducted on all facilities at the following levels; (a) statewide, (b) urban/rural designation, and (c) region. Descriptive statistics were employed at each stage to provide an overall picture of rates and program types. For regions where inconsistencies were found in the data, individual facility data were analyzed for outliers (+ or -) and outliers investigated to ensure responses were valid. Additional analyses examining each region (i.e., Area Development District (ADD)) are included in the appendix of this report.

Length of Care. Market rates were first reported based on the providers’ fee structure and, where necessary, converted to daily rates for analyses. For providers who reported an hourly fee, the fee was multiplied by five (the number of hours which constitutes full-time care in Kentucky). Part time fees were multiplied by four. For providers who reported a full time or part time weekly fee, the reported fee was divided by five; and when a monthly fee was reported by a facility, it was divided by 25. These calculations were based on the typical number of business days a facility was open. Based on these data it appears that a large majority of facilities operate during traditional hours only.

Rate Analyses. All rate data were converted to a daily rate and analyzed to reflect percentiles. Results are presented from the 75th percentile, the present structure used by the Cabinet for Families and Children to determine subsidy payments.

Per recommendations in the literature, facilities were excluded from analysis if they indicated they did not charge for services, or were publically supported (Grobe, Weber et al., 2003). This was a change from the data analysis in the 2007 Market Rate Study, which had not excluded these facilities.

Comparative Analyses. A total of 1,466 Type I facilities, 84 Type II facilities, and 292 Certified facilities responded to the survey. ANOVA was used to examine significant differences in the rates charged among facilities,. Results indicated that Type I facilities have significantly higher full-time Infant/Toddler and Preschool rates than either Type II or Certified facilities. Type I facilities also have higher part-time Infant/Toddler rates than other facility types. The rates for Part-Time preschool as well as for School Aged care (either Part or Full time) did not significantly differ across the facility types. Results from comparative analysis on these variables are included in the appendix of this report.

Results

Statewide Rates. Overall, statewide child care rates increased from 2009 to 2011. Specifically, at the state level, Type I and II increased rates an average of \$1.00 per day, while Certified Home care rates increased 0.71. Statewide Full-Time rates increased an average of \$1.51 per day with Type I facilities reporting the highest increases. Overall, increases were less than increases found between the 2007 and 2009 studies (average of \$1.83).

Table 5 illustrates these findings.

Table 5. Statewide Child Care Rate Trend, 2005-2009 (75th Percentile)

Full-Time	Type I			Type II			Certified Home		
	0 – 24 mos	2 – 4 yrs	5 yrs +	0 – 24 mos	2 – 4 yrs	5 yrs +	0 – 24 mos	2 – 4 yrs	5 yrs +
2005	24.00	20.00	20.00	20.00	18.00	18.00	20.00	19.00	18.00
2007	24.00	22.00	20.00	24.00	22.00	20.00	22.00	20.00	19.00
2009	26.00	24.00	21.00	24.00	22.00	20.00	23.00	21.00	20.00
2011	28.00	25.00	23.00	26.63	23.00	21.00	25.00	23.00	20.00
Part-Time	Type I			Type II			Certified Home		
	0 – 24 mos	2 – 4 yrs	5 yrs +	0 – 24 mos	2 – 4 yrs	5 yrs +	0 – 24 mos	2 – 4 yrs	5 yrs +
2005	20.00	15.60	13.00	15.00	15.00	14.00	17.00	15.00	14.00
2007	18.00	15.00	13.00	17.00	15.95	14.00	16.00	15.00	13.00
2009	23.00	21.00	18.00	20.87	20.00	20.00	20.00	20.00	17.00
2011	25.00	21.00	17.10	20.00	20.00	25.00	20.00	18.75	18.50
2005-11 Difference	Type I			Type II			Certified Home		
	0 – 24 mos	2 – 4 yrs	5 yrs +	0 – 24 mos	2 – 4 yrs	5 yrs +	0 – 24 mos	2 – 4 yrs	5 yrs +
Full-Time	4.00	5.00	3.00	6.63	5.00	3.00	5.00	4.00	2.00
Part-Time	5.00	5.40	4.10	5.00	5.00	11.00	3.00	3.75	4.50

Percentile Ranges. To illustrate the range in reported rates across facility type, Full-Time and Part-Time, rates from the 65th to 75th percentile are provided in the Table 6. These data were aggregated for statewide reporting (

Table 6 and Table 7).

Table 6. Statewide Child Care Ranges Full and Part-Time by Age Category (65th to 75th Percentile)

	Full-Time			Part-Time		
	0 – 24 mos	2 – 4 yrs	5 yrs +	0 – 24 mos	2 – 4 yrs	5 yrs +
65 th	25.00	23.00	20.00	20.00	18.00	15.44
66 th	25.00	23.00	20.00	20.00	18.00	16.00
67 th	25.00	23.00	20.00	20.00	18.00	16.00
68 th	25.00	23.00	20.00	20.00	18.00	16.00
69 th	25.50	24.00	21.00	21.00	19.00	16.00
70 th	26.00	24.00	21.00	21.00	19.83	16.00
71 st	26.00	24.00	21.00	22.00	20.00	16.61
72 nd	26.00	24.00	21.00	22.00	20.00	17.00
73 rd	26.00	25.00	22.00	23.00	20.00	17.00
74 th	27.00	25.00	22.00	23.52	20.00	17.14
75 th	27.00	25.00	22.00	24.00	20.00	17.55

Table 7. Statewide Child Care Rate Ranges Full and Part-Time by Facility Type and Age Category (65th to 75th Percentile)

Full-Time									
	Type I			Type II			Certified Home		
	0 – 24 mos	2 – 4 yrs	5 yrs +	0 – 24 mos	2 – 4 yrs	5 yrs +	0 – 24 mos	2 – 4 yrs	5 yrs +
65 th	26.00	23.18	20.46	23.18	21.65	20.00	23.00	20.00	19.00
66 th	26.00	24.00	21.00	23.57	22.00	20.00	23.00	20.00	19.00
67 th	26.10	24.00	21.00	23.97	22.00	20.00	23.00	20.24	20.00
68 th	27.00	24.00	21.00	24.00	22.00	20.00	23.20	21.00	20.00
69 th	27.00	24.00	21.00	24.00	22.00	20.00	23.50	22.00	20.00
70 th	27.00	24.34	22.00	24.00	22.00	20.00	24.00	22.00	20.00
71 st	27.00	25.00	22.00	24.00	22.00	20.18	24.06	22.00	20.00
72 nd	27.50	25.00	22.00	24.00	22.32	20.76	24.50	22.00	20.00
73 rd	28.00	25.00	22.00	24.00	23.00	21.00	25.00	22.56	20.00
74 th	28.00	25.00	22.00	24.23	23.00	21.00	25.00	23.00	20.00
75 th	28.00	25.00	23.00	24.63	23.00	21.00	25.00	23.00	20.00
Part-Time									
	Type I			Type II			Certified Home		
	0 – 24 mos	2 – 4 yrs	5 yrs +	0 – 24 mos	2 – 4 yrs	5 yrs +	0 – 24 mos	2 – 4 yrs	5 yrs +
65 th	22.00	18.00	15.00	17.80	17.75	22.50	18.00	16.00	16.00
66 th	22.00	18.00	15.00	18.12	18.10	23.00	18.00	16.70	16.00
67 th	23.00	18.76	15.43	18.44	18.45	23.50	18.00	17.00	16.00
68 th	23.00	19.17	16.00	18.76	18.80	24.00	18.00	17.00	16.00
69 th	24.00	20.00	16.00	19.08	19.15	24.50	18.50	17.05	16.29
70 th	24.00	20.00	16.00	19.40	19.50	25.00	19.00	18.00	16.70
71 st	25.00	20.00	16.00	19.72	19.85	25.00	19.00	18.00	17.11
72 nd	25.00	20.00	16.00	20.00	20.00	25.00	20.00	18.00	17.52
73 rd	25.00	20.00	16.66	20.00	20.00	25.00	20.00	18.00	17.93
74 th	25.00	20.92	17.00	20.00	20.00	25.00	20.00	18.00	18.00
75 th	25.00	21.00	17.00	20.00	20.00	25.00	20.00	18.75	18.00

Rates are italicized when the number of facilities is less than 10.

Regional Rates. Using the county designations provided by DCC, statewide data were disaggregated by region (East, West, Central). Table 8 presents regions and county designations while Table 9 presents 2011 rates by region, facility type and length of care.

Table 8. Regional County Designation

Region	Counties
East	Bath, Bell, Boyd, Bracken, Breathitt, Carter, Clay, Elliot, Fleming, Floyd, Greenup, Harlan, Jackson, Johnson, Knott, Knox, Laurel, Lawrence, Lee, Leslie, Letcher, Lewis, Magoffin, Martin, Mason, Menifee, Montgomery, Morgan, Owsley, Perry, Pike, Robertson, Rockcastle, Rowan, Whitley, Wolfe
Central	Adair, Anderson, Boone, Bourbon, Boyle, Bullitt, Campbell, Carlisle, Carroll, Casey, Clark, Clinton, Cumberland, Estill, Fayette, Franklin, Gallatin, Garrard, Grant, Green, Harrison, Henry, Jefferson, Jessamine, Kenton, Lincoln, Madison, McCreary, Mercer, Nicholas, Oldham, Owen, Pendleton, Powell, Pulaski, Russell, Scott, Shelby, Spencer, Taylor, Trimble, Wayne, Woodford
West	Allen, Ballard, Barren, Breckinridge, Butler, Caldwell, Calloway, Christian, Crittenden, Daviess, Edmonson, Fulton, Graves, Grayson, Hancock, Hardin, Hart, Henderson, Hickman, Hopkins, Laure, Livingston, Logan, Lyon, Marion,

2011 Kentucky Child Care Market Rate Study

Marshall, McCracken, Mclean, Meade, Metcalfe, Monroe, Muhlenberg, Nelson, Ohio, Simpson, Todd, Trigg, Union, Warren, Washington, Webster

Table 9. Statewide Child Care Rate by Region (75th Percentile)

Full-Time	Type I			Type II			Certified Home		
	0 – 24 mos	2 – 4 yrs	5 yrs +	0 – 24 mos	2 – 4 yrs	5 yrs +	0 – 24 mos	2 – 4 yrs	5 yrs +
East	22.00	20.00	19.00	19.00	18.00	16.50	20.00	18.75	20.00
Central	31.60	28.00	24.00	25.50	25.00	23.75	25.00	25.00	21.75
West	23.00	22.00	19.00	20.00	20.00	19.50	20.00	19.00	18.00
Part-Time	Type I			Type II			Certified Home		
	0 – 24 mos	2 – 4 yrs	5 yrs +	0 – 24 mos	2 – 4 yrs	5 yrs +	0 – 24 mos	2 – 4 yrs	5 yrs +
East	18.00	17.00	14.00	<i>20.00</i>	<i>18.00</i>	<i>15.00</i>	15.00	14.25	14.25
Central	30.00	25.00	20.00	20.88	20.00	28.50	20.00	20.00	23.50
West	20.50	16.55	16.50	19.00	20.75	20.00	15.75	15.00	14.00

Rates are italicized when the number of facilities is less than 10.

Regional Trends. Full-Time rates increased slightly in each region for Type I facilities between 2009 and 2011. 2011. No stable trends exist for Type II or Certified Homes between the two studies, though the greatest increase across studies was in the Central Region (average of \$1.84).

Table 10 presents the full-time rates and

Table 11 presents the part-time rates.

Table 10. Statewide Child Care Rate by Region, Full-Time Rates (75th Percentile)

East, Full-Time	Type I			Type II			Certified Home		
	0 – 24 mos	2 – 4 yrs	5 yrs +	0 – 24 mos	2 – 4 yrs	5 yrs +	0 – 24 mos	2 – 4 yrs	5 yrs +
2005	19.00	16.00	16.00	19.00	17.00	17.00	17.00	16.00	16.00
2007	18.00	17.00	17.00	18.00	17.00	17.00	18.00	18.00	17.00
2009	21.00	19.00	18.00	22.50	20.00	20.00	19.50	19.00	19.00
2011	22.00	20.00	19.00	19.00	18.00	16.50	20.00	18.75	20.00
Difference 2005-11	3.00	4.00	3.00	0	1.00	-.50	3.00	2.75	4.00
Central, Full-Time	Type I			Type II			Certified Home		
	0 – 24 mos	2 – 4 yrs	5 yrs +	0 – 24 mos	2 – 4 yrs	5 yrs +	0 – 24 mos	2 – 4 yrs	5 yrs +
2005	25.00	22.25	21.00	24.00	20.25	20.00	22.00	20.00	20.00
2007	25.00	24.00	21.00	25.00	24.00	21.00	25.00	23.00	21.00
2009	28.00	25.00	23.00	25.00	25.00	21.00	24.00	22.00	20.00
2011	31.60	28.00	24.00	25.50	25.00	23.75	25.00	25.00	21.75
Difference 2005-11	6.60	5.75	3.00	1.50	4.75	3.75	3.00	5.00	1.75
West, Full-Time	Type I			Type II			Certified Home		
	0 – 24 mos	2 – 4 yrs	5 yrs +	0 – 24 mos	2 – 4 yrs	5 yrs +	0 – 24 mos	2 – 4 yrs	5 yrs +
2005	19.00	18.00	17.00	18.00	16.00	15.00	17.00	17.00	16.00
2007	19.00	18.00	17.00	19.00	18.00	17.00	19.00	18.00	17.00
2009	21.00	20.00	19.15	21.00	20.00	20.00	18.88	17.75	17.00
2011	23.00	22.00	19.00	20.00	20.00	19.50	20.00	19.00	18.00
Difference 2005-11	4.00	4.00	2.00	2.00	4.00	4.50	3.00	2.00	2.00

Table 11. Statewide Child Care Rate by Region, Part-Time Rates (75th Percentile)

East, Part-Time	Type I			Type II			Certified Home		
	0 – 24 mos	2 – 4 yrs	5 yrs +	0 – 24 mos	2 – 4 yrs	5 yrs +	0 – 24 mos	2 – 4 yrs	5 yrs +
2005	15.00	12.00	11.15	13.00	12.00	12.00	14.00	12.00	12.00
2007	14.00	13.00	12.00	14.00	13.00	12.00	15.00	14.00	13.00
2009	18.38	16.00	16.00	20.00	19.00	16.00	17.50	17.00	17.00
2011	18.00	17.00	14.00	20.00	18.00	15.00	15.00	14.25	14.25
Difference 2005-11	3.00	5.00	2.85	7.00	6.00	3.00	1.00	2.25	2.25
Central, Part-Time	Type I			Type II			Certified Home		
	0 – 24 mos	2 – 4 yrs	5 yrs +	0 – 24 mos	2 – 4 yrs	5 yrs +	0 – 24 mos	2 – 4 yrs	5 yrs +
2005	23.18	17.00	13.00	18.50	15.00	15.00	19.00	17.00	15.00
2007	18.28	16.54	13.60	18.28	16.54	13.60	18.00	16.00	14.00
2009	26.00	24.00	20.00	25.00	25.00	20.00	20.00	20.00	19.00
2011	30.00	25.00	20.00	20.88	20.00	28.50	20.00	20.00	23.50
Difference 2005-11	6.82	8.00	7.00	2.38	5.00	13.50	1.00	3.00	8.50
West, Part-Time	Type I			Type II			Certified Home		
	0 – 24 mos	2 – 4 yrs	5 yrs +	0 – 24 mos	2 – 4 yrs	5 yrs +	0 – 24 mos	2 – 4 yrs	5 yrs +
2005	20.00	16.60	14.00	15.00	15.00	14.00	15.00	15.00	15.00
2007	14.00	13.00	12.00	14.00	13.00	12.00	15.00	13.79	12.00
2009	20.13	19.00	17.75	21.00	20.00	20.00	16.00	16.00	15.00
2011	20.50	16.55	16.50	19.00	20.75	20.00	15.75	15.00	14.00
Difference 2005-11	.50	-.05	2.50	4.00	5.75	6.00	.75	0	-1.00

Rates are italicized when the number of facilities is less than 10.

Child Care Rates by Urban/Rural Designation Rates were examined using the urban/rural designations provided by DCC. Table 12 presents the counties and designations; Table 13 and Table 14 presents the rates;

Table 15 presents the rates by percentile.

Full-Time rates increased slightly in 2011, when examined by urban/rural designation (average increase of \$0.57), as did Part-Time rates among licensed and certified centers (average increase of \$0.11). Based on the findings of the matched-sample analysis, fewer high-priced centers completed the 2011 survey than the 2009 survey. These high-priced centers were primarily in urban areas.

Table 12. Urban/Rural County Designation

	Counties
Urban	Barren, Bell, Boone, Bourbon, Boyd, Boyle, Calloway, Campbell, Christian, Clark, Daviess, Fayette, Franklin, Graves, Greenup, Hardin, Henderson, Jefferson, Jessamine, Kenton, Madison, Mason, McCracken, Perry, Pike, Pulaski, Taylor, and Warren
Rural	Adair, Allen, Anderson, Ballard, Bath, Bracken, Breathitt, Breckinridge, Bullitt, Butler, Caldwell, Carlisle, Carroll, Carter, Casey, Clay, Clinton, Crittenden, Cumberland, Edmonson, Elliott, Estill, Fleming, Floyd, Fulton, Gallatin, Garrard, Grant, Grayson, Green, Hancock, Harlan, Harrison, Hart, Henry, Hickman, Hopkins, Jackson, Johnson, Knott, Knox, Laure, Laurel, Lawrence, Lee, Leslie, Letcher, Lewis, Lincoln, Livingston, Logan, Lyon, Magoffin, Marion, Marshall, Martin, McCreary, Mclean, Meade, Menifee, Mercer, Metcalfe, Monroe, Montgomery, Morgan, Muhlenberg, Nelson, Nicholas, Ohio, Oldham, Owen, Owsley, Pendleton, Powell, Robertson, Rockcastle, Rowan, Russell, Scott, Shelby, Simpson, Spencer, Todd, Trigg, Trimble, Union, Washington, Wayne, Webster, Whitley, Wolfe, and Woodford

Table 13. Statewide Child Care Rate by Urban/Rural Designation (75th Percentile)

	Type I			Type II			Certified Home		
	0 – 24 mos	2 – 4 yrs	5 yrs +	0 – 24 mos	2 – 4 yrs	5 yrs +	0 – 24 mos	2 – 4 yrs	5 yrs +
Urban, Full-Time	30.50	27.00	24.00	25.00	24.00	23.00	25.00	25.00	21.00
Rural, Full-Time	23.38	20.00	20.00	21.00	20.00	20.00	20.00	20.00	18.50
Urban, Part-Time	27.50	22.75	20.00	20.00	20.00	26.75	20.00	20.00	19.50
Rural, Part-Time	20.75	16.95	15.00	20.50	20.00	20.00	15.00	15.00	16.00

Rates are italicized when the number of facilities is less than 10.

Table 14. Child Care Rates Trend by Urban/Rural Designation (75th Percentile)

Urban, Full-Time	Type I			Type II			Certified Home		
	0 – 24 mos	2 – 4 yrs	5 yrs +	0 – 24 mos	2 – 4 yrs	5 yrs +	0 – 24 mos	2 – 4 yrs	5 yrs +
2005	26.00	23.00	21.80	25.00	22.00	20.00	22.00	20.00	20.00
2007	37.50	33.00	31.50	37.50	33.00	31.50	34.00	30.00	30.00
2009	29.50	26.40	23.00	25.00	25.00	25.00	24.50	22.00	20.00
2011	30.50	27.00	24.00	25.00	24.00	23.00	25.00	25.00	21.00
Rural, Full-Time	Type I			Type II			Certified Home		
	0 – 24 mos	2 – 4 yrs	5 yrs +	0 – 24 mos	2 – 4 yrs	5 yrs +	0 – 24 mos	2 – 4 yrs	5 yrs +
2005	19.00	17.00	16.00	18.00	16.00	16.00	17.00	17.00	16.00
2007	30.00	27.00	25.50	30.00	27.00	25.50	27.00	27.00	25.50
2009	22.00	20.00	19.00	21.00	20.00	20.00	18.00	18.75	18.00
2011	23.38	20.00	20.00	21.00	20.00	20.00	20.00	20.00	18.50
Urban, Part-Time	Type I			Type II			Certified Home		
	0 – 24 mos	2 – 4 yrs	5 yrs +	0 – 24 mos	2 – 4 yrs	5 yrs +	0 – 24 mos	2 – 4 yrs	5 yrs +
2005	23.00	18.00	14.00	20.00	16.00	15.00	19.00	17.00	15.00
2007	18.00	16.00	13.00	18.00	16.00	13.00	16.00	15.00	11.00

2011 Kentucky Child Care Market Rate Study

2009	26.00	25.00	20.00	25.00	25.00	21.50	17.00	16.00	15.00
2011	27.50	22.75	20.00	20.00	20.00	26.75	20.00	20.00	19.50
Rural, Part-Time	Type I			Type II			Certified Home		
	0 – 24 mos	2 – 4 yrs	5 yrs +	0 – 24 mos	2 – 4 yrs	5 yrs +	0 – 24 mos	2 – 4 yrs	5 yrs +
2005	18.00	15.00	12.00	15.00	14.00	14.00	17.00	13.00	12.00
2007	14.60	13.00	9.00	14.60	13.00	9.00	14.00	13.00	7.50
2009	20.00	18.00	16.00	19.00	19.25	18.50	20.50	20.00	19.00
2011	20.75	16.95	15.00	20.50	20.00	<i>20.00</i>	15.00	15.00	16.00

Rates are italicized when the number of facilities is less than 10.

Table 15. Statewide Child Care Rate Ranges Urban/Rural Designation (65th to 75th Percentile)

Full-Time						
	Urban			Rural		
	0 – 24 mos	2 – 4 yrs	5 yrs +	0 – 24 mos	2 – 4 yrs	5 yrs +
65 th	27.00	25.00	22.00	21.00	20.00	18.00
66 th	27.00	25.00	22.00	21.00	20.00	18.00
67 th	27.00	25.00	22.00	21.00	20.00	18.00
68 th	27.00	25.00	22.00	21.48	20.00	18.00
69 th	27.50	25.00	22.00	22.00	20.00	18.00
70 th	28.00	25.00	23.00	22.00	20.00	19.00
71 st	28.00	25.00	23.00	22.00	20.00	19.00
72 nd	28.00	25.04	23.00	22.00	20.00	19.00
73 rd	28.35	26.00	23.75	22.00	20.00	19.96
74 th	29.00	26.00	24.00	22.50	20.00	20.00
75 th	29.00	26.00	24.00	22.50	20.00	20.00
Part-Time						
	Urban			Rural		
	0 – 24 mos	2 – 4 yrs	5 yrs +	0 – 24 mos	2 – 4 yrs	5 yrs +
65 th	21.55	19.53	17.00	16.00	15.00	14.00
66 th	22.00	20.00	17.00	16.72	15.00	14.00
67 th	22.69	20.00	17.00	17.00	15.00	14.24
68 th	23.00	20.00	17.00	17.00	15.00	14.96
69 th	23.00	20.00	17.32	17.48	15.00	15.00
70 th	24.00	20.00	17.40	18.00	15.00	15.00
71 st	25.00	20.00	18.00	18.00	15.00	15.00
72 nd	25.00	20.67	18.40	18.00	15.00	15.00
73 rd	25.00	21.00	19.60	18.00	16.00	15.00
74 th	25.00	21.59	20.00	19.00	16.00	15.00
75 th	26.00	22.00	20.00	19.00	16.00	15.00

Table 16. Statewide Child Care Rate Trend by Urban/Rural Designation (75th Percentile)

East	Type I			Type II			Certified Home		
	0 – 24 mos	2 – 4 yrs	5 yrs +	0 – 24 mos	2 – 4 yrs	5 yrs +	0 – 24 mos	2 – 4 yrs	5 yrs +
Urban, Full-Time	23.50	20.00	23.75	<i>20.00</i>	<i>20.00</i>	<i>20.00</i>	23.75	23.50	21.00
Rural, Full-Time	22.00	19.00	18.00	19.00	18.00	16.00	19.25	18.00	20.00
Urban, Part-Time	20.00	18.00	<i>17.00</i>	-	-	-	17.25	16.50	18.00
Rural, Part-Time	17.00	16.00	14.00	<i>20.00</i>	<i>18.00</i>	<i>15.00</i>	14.00	14.25	<i>12.75</i>
Central	Type I			Type II			Certified Home		
	0 – 24 mos	2 – 4 yrs	5 yrs +	0 – 24 mos	2 – 4 yrs	5 yrs +	0 – 24 mos	2 – 4 yrs	5 yrs +
Urban, Full-Time	32.50	29.00	24.00	25.50	24.50	23.25	26.63	25.00	22.00
Rural, Full-Time	26.50	24.00	21.00	25.75	25.00	25.00	22.50	20.00	20.00
Urban, Part-Time	30.00	25.00	20.00	20.00	20.00	28.50	22.50	20.00	21.75
Rural, Part-Time	25.00	24.00	17.00	<i>25.00</i>	<i>20.00</i>	-	19.50	17.00	26.00
West	Type I			Type II			Certified Home		
	0 – 24 mos	2 – 4 yrs	5 yrs +	0 – 24 mos	2 – 4 yrs	5 yrs +	0 – 24 mos	2 – 4 yrs	5 yrs +
Urban, Full-Time	24.00	23.00	20.00	<i>20.00</i>	<i>20.00</i>	<i>17.00</i>	20.00	19.25	18.50
Rural, Full-Time	21.00	20.00	19.00	20.00	20.00	20.00	18.50	18.50	17.75
Urban, Part-Time	20.00	19.00	16.00	<i>17.00</i>	<i>17.00</i>	<i>15.00</i>	17.00	16.00	<i>14.50</i>
Rural, Part-Time	22.50	15.00	18.75	<i>20.00</i>	<i>21.50</i>	<i>20.00</i>	15.00	15.00	<i>16.00</i>

Rates are italicized when the number of facilities is less than 10.

Subsidy Participation. Additional analysis was conducted in 2011 to investigate the number of facilities reporting participation in Kentucky’s subsidy program. Consistent with previous studies, a majority of facilities across all types accepted state subsidy payments (87.1%), illustrated in Table 17 and Figure 1.

Percent Statewide Subsidy Acceptance 2007 to 2011. Likewise, facilities reported the number of children receiving subsidy in their program. For those who accepted subsidy, the average number of children receiving subsidy payments was 5.43 (SD = 7.65). Table 18 describes the average percent and number of children enrolled in child care receiving subsidy.

Eighty-one (4.4%) facilities did not indicate if they accepted subsidy (of those, 41 completed online, 40 completed paper), while 72 of these facilities did not indicate whether they had any children enrolled, so are not included in this analysis. Rate differences existed between programs who reported accepting subsidy and those who did not. Full-time rates were slightly higher at facilities not accepting subsidy (\$0.67). This is a change from previous studies where those accepting subsidy had higher rates (\$1.51 in 2009) than those not accepting subsidy. This difference was most prominent in the Central region, where the average difference was \$3.93 more for those not accepting subsidy. Rates are described in Tables 19 – 22.

Table 17. Percent (and number) Statewide Subsidy Acceptance

	Overall	Type I	Type II	Certified Home
Statewide	87.2 (1,540)	86.1 (1208)	95.2 (79)	90.0 (252)
East	79.9 (187)	75.4 (135)	100.0 (15)	92.5 (37)
Central	87.5 (943)	86.8 (742)	95.6 (43)	88.8 (84.9)
West	90.1 (409)	89.7 (331)	91.3 (21)	91.9 (57)

Figure 1. Percent Statewide Subsidy Acceptance 2007 to 2011

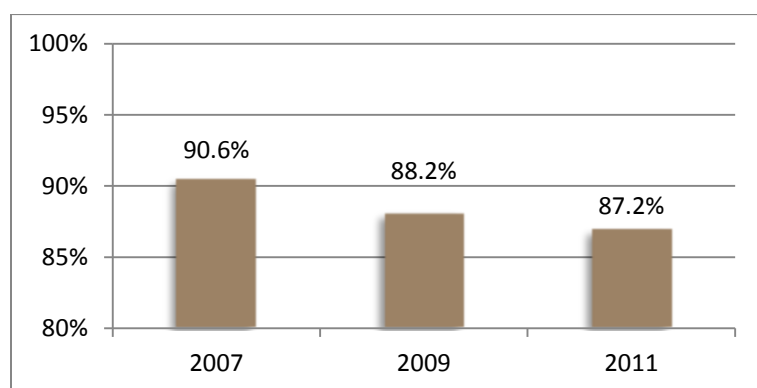


Table 18. Children Receiving Subsidy (Percent and Number of children in child care)

	All Facilities	Type I	Type II	Certified Homes
Statewide	27.4 (24,436)	26.8 (23,037)	36.7 (366)	49.4 (1,033)
East	29.0 (2,687)	28.5 (2,496)	47.9 (93)	34.3 (98)
Central	26.9 (15,552)	26.1 (14,614)	39.7 (204)	54.4 (734)

2011 Kentucky Child Care Market Rate Study

West	28.2 (6,197)	27.9 (5,927)	23.9 (69)	44.3 (201)
-------------	--------------	--------------	-----------	------------

Table 19. Statewide Subsidy Rates, All Facility Types

Statewide	Full-Time			Part-Time		
	0 – 24 mos	2 – 4 yrs	5 yrs +	0 – 24 mos	2 – 4 yrs	5 yrs +
Accepts Subsidy	27.00	25.00	22.00	24.50	20.65	17.55
No Subsidy	28.75	25.00	22.00	20.00	15.45	24.00

Rates are italicized when the number of facilities is less than 10.

Table 20. Full-Time Statewide Child Care Rate, by Subsidy Participation, Region (75th Percentile)

Statewide	Type I			Type II			Certified Home		
	0 – 24 mos	2 – 4 yrs	5 yrs +	0 – 24 mos	2 – 4 yrs	5 yrs +	0 – 24 mos	2 – 4 yrs	5 yrs +
Accepts Subsidy	28.00	25.00	23.00	24.25	23.00	21.00	25.00	22.25	20.00
No Subsidy	35.00	22.00	22.00	<i>30.50</i>	<i>30.50</i>	<i>18.00</i>	28.00	28.00	25.00
East	Type I			Type II			Certified Home		
	0 – 24 mos	2 – 4 yrs	5 yrs +	0 – 24 mos	2 – 4 yrs	5 yrs +	0 – 24 mos	2 – 4 yrs	5 yrs +
Accepts Subsidy	22.00	20.00	19.00	19.00	18.00	<i>16.50</i>	20.00	19.75	20.00
No Subsidy	<i>23.60</i>	15.55	<i>20.00</i>	-	-	-	<i>19.00</i>	<i>18.00</i>	<i>20.00</i>
Central	Type I			Type II			Certified Home		
	0 – 24 mos	2 – 4 yrs	5 yrs +	0 – 24 mos	2 – 4 yrs	5 yrs +	0 – 24 mos	2 – 4 yrs	5 yrs +
Accepts Subsidy	31.50	28.00	24.00	25.00	25.00	24.00	25.00	25.00	21.00
No Subsidy	35.68	26.00	22.00	<i>32.00</i>	<i>32.00</i>	-	28.75	28.75	<i>29.50</i>
West	Type I			Type II			Certified Home		
	0 – 24 mos	2 – 4 yrs	5 yrs +	0 – 24 mos	2 – 4 yrs	5 yrs +	0 – 24 mos	2 – 4 yrs	5 yrs +
Accepts Subsidy	23.00	22.00	19.00	20.00	20.00	20.00	20.00	19.00	18.00
No Subsidy	<i>20.00</i>	21.25	<i>22.00</i>	<i>20.00</i>	<i>20.00</i>	<i>18.00</i>	<i>23.50</i>	<i>23.50</i>	<i>24.00</i>

Rates are italicized when the number of facilities is less than 10.

Table 21. Part-Time Statewide Child Care Rate by Subsidy Participation, Region (75th Percentile)

Statewide	Type I			Type II			Certified Home		
	0 – 24 mos	2 – 4 yrs	5 yrs +	0 – 24 mos	2 – 4 yrs	5 yrs +	0 – 24 mos	2 – 4 yrs	5 yrs +
Accepts Subsidy	25.00	22.00	17.00	20.00	20.00	25.00	20.00	18.00	18.00
No Subsidy	16.75	14.58	17.25	-	-	-	28.00	28.00	28.00
East	Type I			Type II			Certified Home		
	0 – 24 mos	2 – 4 yrs	5 yrs +	0 – 24 mos	2 – 4 yrs	5 yrs +	0 – 24 mos	2 – 4 yrs	5 yrs +
Accepts Subsidy	18.00	17.00	14.00	20.00	18.00	15.00	15.00	14.50	15.00
No Subsidy	13.75	13.26	15.00	-	-	-	-	-	-
Central	Type I			Type II			Certified Home		
	0 – 24 mos	2 – 4 yrs	5 yrs +	0 – 24 mos	2 – 4 yrs	5 yrs +	0 – 24 mos	2 – 4 yrs	5 yrs +
Accepts Subsidy	30.00	25.00	20.00	20.75	20.00	28.50	20.00	20.00	20.00
No Subsidy	22.25	15.60	24.00	-	-	-	28.00	28.00	28.00
West	Type I			Type II			Certified Home		
	0 – 24 mos	2 – 4 yrs	5 yrs +	0 – 24 mos	2 – 4 yrs	5 yrs +	0 – 24 mos	2 – 4 yrs	5 yrs +
Accepts Subsidy	21.00	18.00	16.50	19.00	20.75	20.00	15.75	15.00	15.25
No Subsidy	14.00	14.15	12.00	-	-	-	12.00	12.00	-

Rates are italicized when the number of facilities reporting is less than 10.

Table 22. Child Care Rates by Subsidy Participation and Urbanicity (75th Percentile)

Urban, Full-Time	Type I			Type II			Certified Home		
	0 – 24 mos	2 – 4 yrs	5 yrs +	0 – 24 mos	2 – 4 yrs	5 yrs +	0 – 24 mos	2 – 4 yrs	5 yrs +
Accepts Subsidy	30.40	27.00	24.00	25.00	24.00	23.00	25.00	25.00	21.00
No Subsidy	35.27	23.90	22.00	32.00	32.00	-	28.25	28.50	29.50
Rural, Full-Time	Type I			Type II			Certified Home		
	0 – 24 mos	2 – 4 yrs	5 yrs +	0 – 24 mos	2 – 4 yrs	5 yrs +	0 – 24 mos	2 – 4 yrs	5 yrs +
Accepts Subsidy	24.00	21.00	20.00	21.00	20.00	20.00	20.00	20.00	18.50
No Subsidy	18.13	15.40	14.00	26.00	26.00	18.00	23.50	24.25	21.00
Urban, Part-Time	Type I			Type II			Certified Home		
	0 – 24 mos	2 – 4 yrs	5 yrs +	0 – 24 mos	2 – 4 yrs	5 yrs +	0 – 24 mos	2 – 4 yrs	5 yrs +
Accepts Subsidy	28.00	23.35	20.00	20.00	20.00	26.75	20.00	20.00	19.50
No Subsidy	20.50	15.60	21.75	-	-	-	28.00	28.00	-
Rural, Part-Time	Type I			Type II			Certified Home		
	0 – 24 mos	2 – 4 yrs	5 yrs +	0 – 24 mos	2 – 4 yrs	5 yrs +	0 – 24 mos	2 – 4 yrs	5 yrs +
Accepts Subsidy	21.00	18.00	15.00	20.50	20.00	20.00	15.00	15.00	16.00
No Subsidy	11.50	8.63	13.00	-	-	-	28.00	28.00	28.00

Rates are italicized when the number of facilities reporting is less than 10.

Current Subsidy Payment Rates. The Division of Child Care (DCC) provides oversight to the Kentucky Child Care Subsidy Program (CCAP) and pays subsidy based on the Maximum Payment Rate Chart, based on the 2005 Market Rate Study rates. Analysis were conducted to determine the number of child care facilities whose daily rates were less than or equal to the current maximum payment rate. This chart was compared to reported rates in the current market rate study.

Table 23 represents the percent of facilities whose daily rate is equal to or less than the maximum rate in their area designated by DCC. Thus, the percent is the number of facilities where the subsidy payment covers all of the cost of child care.

Table 23. Percent (and number) of facilities whose rates are less than or equal to the current maximum payment

Full-Time												
	Total			Type I			Type II			Certified Home		
	0 – 24 mos	2 – 4 yrs	5 yrs +	0 – 24 mos	2 – 4 yrs	5 yrs +	0 – 24 mos	2 – 4 yrs	5 yrs +	0 – 24 mos	2 – 4 yrs	5 yrs +
Statewide	30.0 (363)	28.1 (381)	47.8 (479)	26.5 (227)	26.9 (270)	48.7 (357)	52.6 (41)	33.8 (27)	47.4 (27)	34.2 (95)	31.1 (84)	44.8 (95)
Urban	26.3 (208)	25.9 (228)	48.2 (314)	23.8 (139)	25.8 (175)	48.8 (242)	57.1 (20)	30.6 (11)	52.0 (13)	28.3 (49)	25.1 (42)	45.0 (59)
Rural	36.9 (155)	32.3 (153)	47.1 (165)	32.4 (88)	29.1 (95)	48.5 (115)	48.8 (21)	36.4 (16)	43.8 (14)	43.8 (46)	40.8 (42)	44.4 (36)
Central	29.7 (222)	27.4 (222)	47.3 (289)	26.3 (138)	26.1 (155)	48.0 (212)	53.3 (24)	34.1 (15)	43.8 (14)	33.5 (60)	30.4 (52)	46.0 (63)
Urban	26.2 (151)	24.8 (155)	46.3 (221)	24.0 (100)	24.6 (116)	47.1 (168)	58.6 (17)	34.5 (10)	50.0 (11)	26.2 (34)	23.4 (29)	42.9 (42)
Rural	41.3 (71)	36.2 (67)	50.7 (68)	35.5 (38)	31.7 (39)	51.8 (44)	43.8 (7)	33.3 (5)	30.0 (3)	53.1 (26)	48.9 (23)	53.8 (21)
East	31.6 (49)	27.2 (49)	37.0 (47)	29.7 (30)	27.0 (34)	39.1 (36)	46.7 (7)	26.7 (4)	44.4 (4)	30.8 (12)	28.2 (11)	26.9 (7)
Urban	31.6 (12)	18.0 (9)	30.3 (10)	32.3 (10)	20.9 (9)	32.1 (9)	50.0 (1)	-	0	20.0 (1)	0	25.0 (1)
Rural	31.6 (37)	30.8 (40)	39.4 (37)	28.6 (20)	30.1 (25)	42.2 (27)	46.2 (6)	30.8 (4)	50.0 (4)	32.4 (11)	32.4 (11)	27.3 (6)
West	29.9 (92)	30.1 (110)	54.2 (143)	25.7 (59)	28.5 (81)	54.8 (109)	55.6 (10)	38.1 (8)	56.3 (9)	38.3 (23)	35.0 (21)	51.0 (25)
Urban	25.4 (45)	31.1 (64)	58.5 (83)	21.5 (29)	30.7 (50)	58.6 (65)	50.0 (2)	20.0 (1)	100.0 (2)	36.8 (14)	34.2 (13)	55.2 (16)
Rural	35.9 (47)	28.9 (46)	49.2 (60)	31.6 (30)	25.6 (31)	50.0 (44)	57.1 (8)	43.8 (7)	50.0 (7)	40.9 (9)	36.4 (8)	45.0 (9)
Part-Time												
	Total			Type I			Type II			Certified Home		
	0 – 24 mos	2 – 4 yrs	5 yrs +	0 – 24 mos	2 – 4 yrs	5 yrs +	0 – 24 mos	2 – 4 yrs	5 yrs +	0 – 24 mos	2 – 4 yrs	5 yrs +
Statewide	35.5 (212)	43.0 (330)	42.1 (80)	31.2 (130)	43.6 (257)	48.2 (68)	41.9 (13)	38.2 (13)	22.2 (2)	46.3 (69)	41.7 (60)	25.0 (10)
Urban	34.7 (141)	41.7 (220)	39.5 (47)	30.4 (88)	41.8 (173)	43.5 (37)	57.1 (8)	50.0 (7)	16.7 (1)	43.7 (45)	40.4 (40)	32.1 (9)
Rural	37.2 (71)	45.8 (110)	46.5 (33)	32.8 (42)	48.0 (1)	55.4 (31)	29.4 (5)	30.0 (6)	33.3 (1)	52.2 (24)	44.4 (20)	8.3 (1)
Central	36.2 (132)	39.8 (194)	32.7 (34)	32.4 (81)	39.5 (148)	41.6 (32)	50.0 (9)	50.0 (9)	-	43.3 (42)	39.4 (37)	9.1 (2)
Urban	35.1 (106)	39.7 (158)	31.3 (26)	30.8 (64)	39.0 (120)	40.0 (24)	61.5 (8)	53.8 (7)	0	42.0 (34)	40.3 (31)	11.1 (2)
Rural	41.3 (26)	40.4 (36)	38.1 (8)	40.5 (17)	41.8 (28)	47.1 (8)	20.0 (1)	40.0 (2)	-	50.0 (8)	35.3 (6)	0
East	37.5 (36)	30.4 (28)	32.4 (11)	31.8 (21)	25.0 (16)	40.0 (10)	28.6 (2)	16.7 (1)	-	56.5 (13)	50.0 (11)	12.5 (1)
Urban	25.0 (6)	26.1 (6)	12.5 (1)	20.0 (4)	21.1 (4)	0	-	-	-	50.0 (2)	50.0 (2)	50.0 (1)
Rural	41.7 (30)	31.9 (22)	38.5 (10)	37.0 (17)	26.7 (12)	52.6 (10)	28.6 (2)	16.7 (1)	0	57.9 (11)	50.0 (9)	0
West	32.4 (44)	57.4 (108)	67.3 (35)	27.7 (28)	62.0 (93)	66.7 (26)	33.3 (2)	30.0 (3)	66.7 (2)	48.3 (14)	42.9 (12)	70.0 (7)
Urban	36.3 (29)	52.8 (56)	71.4 (20)	32.8 (20)	56.3 (49)	68.4 (13)	0	0	100.0 (1)	50.0 (9)	38.9 (7)	75.0 (6)
Rural	26.8 (15)	63.4 (52)	62.5 (15)	20.0 (8)	69.8 (44)	65.0 (13)	40.0 (2)	33.3 (3)	50.0 (1)	45.5 (5)	50.0 (5)	50.0 (1)

High Percent Subsidy. Additional analysis was conducted to investigate differences in facilities who had a high percent of subsidized children. The percent subsidy was calculated by dividing the total enrolled by the number of children on subsidy. When the percent was over 100%, the percent was cleared and considered system missing. Facilities were thus coded as 0= No Subsidy, 1= 1-49% subsidized children, 2= 50-100% subsidized children. Facilities with 50% or more of enrolled children on subsidy were considered having a high percent subsidy. Forty (40) facilities reported accepted subsidies but did not have students whose tuition was subsidized at the present time. The rates for No Children on Subsidy Enrolled thus vary from the rates for Not Accepting Subsidy in the tables above.

Table 24 provides the percent and number of facilities who have a High Percentage of Children whose tuition was subsidized. Table 25 and Table 26 describe the rates for facilities by percent subsidized enrollment.

Table 24. Facilities with High Percent Subsidy (Percent and Number)

	All Facilities	Type I	Type II	Certified Homes
Statewide	29.7 (548)	25.4 (372)	39.3 (33)	49.0 (143)
East	25.5 (64)	21.1 (41)	46.7 (7)	38.1 (16)
Central	30.9 (346)	26.4 (234)	39.1 (18)	50.5 (94)
West	29.2 (138)	25.2 (97)	34.8 (8)	51.6 (33)

Table 25. Full-Time Child Care Rates Facilities by Percent Subsidy Enrollment (75th Percentile)

Statewide	Type I			Type II			Certified Home		
	0 – 24 mos	2 – 4 yrs	5 yrs +	0 – 24 mos	2 – 4 yrs	5 yrs +	0 – 24 mos	2 – 4 yrs	5 yrs +
No Children on Subsidy Enrolled	34.13	26.00	24.33	25.25	25.00	21.00	25.00	25.00	23.50
1-49% Subsidy	31.50	27.60	24.00	25.25	24.00	25.00	23.00	22.00	18.00
50-100% Subsidy	26.00	24.00	22.00	24.00	22.50	20.75	24.08	21.00	20.00
East	Type I			Type II			Certified Home		
	0 – 24 mos	2 – 4 yrs	5 yrs +	0 – 24 mos	2 – 4 yrs	5 yrs +	0 – 24 mos	2 – 4 yrs	5 yrs +
No Children on Subsidy Enrolled	20.00	19.50	18.00	17.00	17.00	15.00	21.00	20.00	22.00
1-49% Subsidy	22.50	20.00	20.00	19.50	19.50	20.00	20.63	20.00	17.75
50-100% Subsidy	22.00	20.00	18.00	20.00	16.00	16.00	20.00	18.00	19.50
Central	Type I			Type II			Certified Home		
	0 – 24 mos	2 – 4 yrs	5 yrs +	0 – 24 mos	2 – 4 yrs	5 yrs +	0 – 24 mos	2 – 4 yrs	5 yrs +
No Children on Subsidy Enrolled	36.00	27.98	30.00	26.00	25.00	21.50	26.25	26.00	25.00
1-49% Subsidy	34.40	30.00	24.00	27.00	25.00	25.50	25.25	24.55	20.00
50-100% Subsidy	27.00	25.00	23.00	24.75	24.25	22.50	25.00	23.00	20.00
West	Type I			Type II			Certified Home		
	0 – 24 mos	2 – 4 yrs	5 yrs +	0 – 24 mos	2 – 4 yrs	5 yrs +	0 – 24 mos	2 – 4 yrs	5 yrs +
No Children on Subsidy Enrolled	26.00	25.00	22.00	19.00	22.00	22.00	19.50	18.00	18.00
1-49% Subsidy	23.30	22.00	19.00	21.50	20.00	21.25	21.50	20.00	16.75
50-100% Subsidy	23.00	21.80	19.00	19.75	18.75	17.25	20.00	19.00	18.00

Rates are italicized when the number of facilities reporting is less than 10.

Table 26. Part-Time Child Care Rates Facilities by Percent Subsidy Enrollment (75th Percentile)

Statewide	Type I			Type II			Certified Home		
	0 – 24 mos	2 – 4 yrs	5 yrs +	0 – 24 mos	2 – 4 yrs	5 yrs +	0 – 24 mos	2 – 4 yrs	5 yrs +
No Children on Subsidy Enrolled	23.00	17.10	<i>13.59</i>	<i>25.00</i>	<i>20.75</i>	-	30.25	30.25	<i>19.50</i>
1-49% Subsidy	28.50	23.30	18.50	<i>24.00</i>	23.00	<i>20.00</i>	20.00	18.50	<i>16.00</i>
50-100% Subsidy	21.00	21.00	17.00	<i>17.75</i>	17.00	<i>24.50</i>	18.75	17.50	20.00
East	Type I			Type II			Certified Home		
	0 – 24 mos	2 – 4 yrs	5 yrs +	0 – 24 mos	2 – 4 yrs	5 yrs +	0 – 24 mos	2 – 4 yrs	5 yrs +
No Children on Subsidy Enrolled	<i>2.00</i>	<i>18.00</i>	<i>10.00</i>	<i>21.00</i>	<i>21.00</i>	-	<i>18.75</i>	<i>17.75</i>	<i>18.00</i>
1-49% Subsidy	18.50	17.00	15.00	<i>17.00</i>	<i>17.00</i>	-	<i>14.50</i>	<i>12.00</i>	<i>11.00</i>
50-100% Subsidy	17.00	15.75	<i>13.50</i>	<i>18.50</i>	<i>15.00</i>	<i>15.00</i>	14.00	14.25	<i>15.00</i>
Central	Type I			Type II			Certified Home		
	0 – 24 mos	2 – 4 yrs	5 yrs +	0 – 24 mos	2 – 4 yrs	5 yrs +	0 – 24 mos	2 – 4 yrs	5 yrs +
No Children on Subsidy Enrolled	23.50	16.17	<i>15.34</i>	<i>25.00</i>	<i>20.00</i>	-	35.00	35.00	<i>20.00</i>
1-49% Subsidy	32.25	25.80	20.00	<i>24.50</i>	<i>25.00</i>	-	<i>24.25</i>	<i>27.50</i>	<i>16.00</i>
50-100% Subsidy	25.75	24.20	17.40	18.50	19.25	<i>32.00</i>	20.00	18.75	23.50
West	Type I			Type II			Certified Home		
	0 – 24 mos	2 – 4 yrs	5 yrs +	0 – 24 mos	2 – 4 yrs	5 yrs +	0 – 24 mos	2 – 4 yrs	5 yrs +
No Children on Subsidy Enrolled	<i>23.00</i>	19.25	<i>12.00</i>	-	<i>18.00</i>	-	<i>15.00</i>	<i>13.50</i>	<i>12.00</i>
1-49% Subsidy	25.00	20.00	15.00	<i>22.25</i>	<i>23.00</i>	<i>20.00</i>	<i>15.00</i>	<i>15.00</i>	<i>16.00</i>
50-100% Subsidy	18.50	16.20	20.00	<i>17.00</i>	<i>17.00</i>	<i>15.00</i>	16.75	16.00	<i>15.00</i>

Rates are italicized when the number of facilities reporting is less than 10.

STAR Rating. Additional analysis were conducted to investigate differences in those facilities designated as participating in Kentucky’s voluntary Quality Rating and Information System, STARS. Facilities participating in STARS receive an initial and annual award for their participation. Additionally, STAR Rated facilities receive additional incentives for accepting children on subsidy, up to \$19.00 per child per month depending on the percent of subsidized children in the facility.

Over a third of facilities who responded to the survey were currently STAR rated, 35.6%. The average STAR Rated Level rose 0.15 points from the 2009 study, presented in Tables 27-29.

The response is slightly higher than the statewide STARS participation of 30% at the time of the study. Comparatively, little difference in child care rate was found between STAR rated and not STAR rated facilities and statewide, Certified Homes showed no difference. This is illustrated in Table 30 – 32.

Table 27. STAR Rated Facilities (All Levels)

	Number of Facilities	Average STAR Rated Level	Std. Deviation
Statewide	655	2.10	.733
Type I	552	2.09	.704
Type II	24	2.00	.933
Certified	79	2.18	.859

Table 28. Percent (and number) of STAR Rated Facilities by Region

	All Facilities	Type I	Type II	Certified Homes
Statewide	35.6 (655)	37.7 (552)	25.6 (24)	27.1 (79)
East	38.6 (97)	40.7 (79)	33.3 (5)	31.0 (13)
Central	32.1 (359)	34.7 (308)	17.4 (8)	23.1 (43)
West	42.2 (199)	42.9 (165)	47.8 (11)	35.9 (23)

Table 29. STAR Rated Facilities by Level

	Number of Facilities	Percent	Cumulative Percent
Level 1	130	19.8	19.8
Level 2	348	53.1	73.0
Level 3	160	24.4	97.4
Level 4	17	2.6	100.0

Table 30. Statewide Child Care Rates by STARS Participation (75th Percentile)

Statewide	Full-Time			Part-Time		
	0 – 24 mos	2 – 4 yrs	5 yrs +	0 – 24 mos	2 – 4 yrs	5 yrs +
STAR Rated	26.13	24.00	23.00	20.75	20.00	16.00
Not STAR Rated	27.00	25.00	22.00	25.00	20.30	20.00

Table 31. Full-Time Child Care Rates by STARS Participation (75th Percentile)

Statewide	Type I			Type II			Certified Home		
	0 – 24 mos	2 – 4 yrs	5 yrs +	0 – 24 mos	2 – 4 yrs	5 yrs +	0 – 24 mos	2 – 4 yrs	5 yrs +
STAR Rated	27.50	25.00	23.90	21.75	21.75	22.50	25.00	23.00	20.00
Not STAR Rated	29.00	26.00	22.00	25.00	24.00	20.75	25.00	23.00	20.00
East	Type I			Type II			Certified Home		
	0 – 24 mos	2 – 4 yrs	5 yrs +	0 – 24 mos	2 – 4 yrs	5 yrs +	0 – 24 mos	2 – 4 yrs	5 yrs +
STAR Rated	22.50	20.00	18.00	<i>19.00</i>	<i>19.00</i>	<i>17.00</i>	21.75	19.75	20.00
Not STAR Rated	21.50	20.00	19.00	20.00	17.25	16.00	20.00	18.00	20.00
Central	Type I			Type II			Certified Home		
	0 – 24 mos	2 – 4 yrs	5 yrs +	0 – 24 mos	2 – 4 yrs	5 yrs +	0 – 24 mos	2 – 4 yrs	5 yrs +
STAR Rated	31.65	27.80	24.00	<i>24.50</i>	<i>24.75</i>	<i>25.00</i>	25.50	25.75	22.00
Not STAR Rated	31.53	28.10	24.00	26.00	25.00	22.50	25.00	25.00	21.00
West	Type I			Type II			Certified Home		
	0 – 24 mos	2 – 4 yrs	5 yrs +	0 – 24 mos	2 – 4 yrs	5 yrs +	0 – 24 mos	2 – 4 yrs	5 yrs +
STAR Rated	23.00	21.80	20.00	<i>20.00</i>	20.00	<i>20.00</i>	20.00	19.00	17.00
Not STAR Rated	23.43	22.00	19.00	20.00	19.25	<i>17.50</i>	19.63	19.50	18.25

Rates are italicized when the number of facilities reporting is less than 10.

Table 32. Part-Time Child Care Rates by STARS Participation (75th Percentile)

Statewide	Type I			Type II			Certified Home		
	0 – 24 mos	2 – 4 yrs	5 yrs +	0 – 24 mos	2 – 4 yrs	5 yrs +	0 – 24 mos	2 – 4 yrs	5 yrs +
STAR Rated	24.50	20.00	15.50	16.75	17.25	<i>23.00</i>	20.00	19.25	18.00
Not STAR Rated	26.75	22.00	20.00	23.00	20.00	<i>28.50</i>	20.00	18.00	21.75
East	Type I			Type II			Certified Home		
	0 – 24 mos	2 – 4 yrs	5 yrs +	0 – 24 mos	2 – 4 yrs	5 yrs +	0 – 24 mos	2 – 4 yrs	5 yrs +
STAR Rated	18.25	16.75	15.00	<i>17.00</i>	<i>17.00</i>	-	17.00	15.75	<i>18.00</i>
Not STAR Rated	17.75	16.00	14.00	<i>20.75</i>	<i>21.00</i>	<i>15.00</i>	14.00	13.50	<i>11.50</i>
Central	Type I			Type II			Certified Home		
	0 – 24 mos	2 – 4 yrs	5 yrs +	0 – 24 mos	2 – 4 yrs	5 yrs +	0 – 24 mos	2 – 4 yrs	5 yrs +
STAR Rated	27.25	24.50	15.50	<i>16.00</i>	<i>15.00</i>	<i>25.00</i>	20.00	20.00	20.00
Not STAR Rated	30.00	25.00	21.75	25.00	20.00	<i>32.00</i>	22.50	20.00	29.75
West	Type I			Type II			Certified Home		
	0 – 24 mos	2 – 4 yrs	5 yrs +	0 – 24 mos	2 – 4 yrs	5 yrs +	0 – 24 mos	2 – 4 yrs	5 yrs +
STAR Rated	20.50	16.40	18.50	<i>17.00</i>	<i>21.75</i>	<i>15.00</i>	18.50	15.50	<i>15.00</i>
Not STAR Rated	20.75	17.00	15.00	<i>22.50</i>	<i>21.25</i>	<i>20.00</i>	15.00	15.00	<i>16.00</i>

Rates are italicized when the number of facilities reporting is less than 10.

Accepts Subsidy and STAR Rated. Descriptive analysis was conducted to investigate the number of facilities who both accept subsidy and are STAR Rated. The rate differences for these facilities are included in the Appendix. Descriptive statistics are included in Table 33.

Table 33. Facilities who Accept Subsidy and are STAR Rated (Percent and Number)

	All Facilities	Type I	Type II	Certified Homes
Statewide	32.1 (566)	33.3 (465)	28.9 (24)	27.5 (77)
East	31.2 (73)	30.9 (55)	33.3 (5)	31.7 (13)
Central	29.5 (317)	31.4 (267)	17.8 (8)	23.6 (42)
West	38.9 (176)	38.8 (143)	47.8 (11)	36.1 (22)

Non-Traditional Hours. Analysis was conducted to investigate differences in those facilities designated as having non-traditional hours and those who do not. For the purposes of this study, non-traditional hours were defined as opening prior to 6 A.M. and/or closing after 7:00 P.M. during the week or offering care during the weekend.

Over sixteen percent of facilities who responded to the survey currently offered non-traditional hours (16.5%, N= 305) (see Table 34). Statewide, those with traditional hours charge on average \$1.72 more than those with non-traditional hours. This difference is higher in Type I facilities, where \$3.17 more is charged for traditional care. Regional differences were noted as well. The Eastern region shows little difference between traditional and non-traditional care (average of .36 more for non-traditional), while the Central region shows non-traditional care is on average 1.70 more for traditional care). This is illustrated in Table 34 - Table 36.

Table 34. Facilities with Non-Traditional Hours (Percent and Number)

	All Facilities	Type I	Type II	Certified Homes
Statewide	16.5 (305)	14.3 (403)	25.0 (21)	25.7 (75)
East	21.1 (53)	18.0 (35)	40.0 (6)	28.6 (12)
Central	15.3 (171)	12.7 (113)	21.7 (10)	25.8 (48)
West	17.2 (81)	15.8 (61)	21.7 (5)	23.4 (15)

Table 35. Full-Time Child Care Rates by Non-Traditional Hours (75th Percentile)

Statewide	Type I			Type II			Certified Home		
	0 – 24 mos	2 – 4 yrs	5 yrs +	0 – 24 mos	2 – 4 yrs	5 yrs +	0 – 24 mos	2 – 4 yrs	5 yrs +
Traditional Hours	30.00	26.00	24.00	25.00	24.00	22.00	25.00	23.00	20.00
Non-Traditional Hours	25.50	24.00	21.00	24.00	21.50	20.00	25.00	23.00	19.50
East	Type I			Type II			Certified Home		
	0 – 24 mos	2 – 4 yrs	5 yrs +	0 – 24 mos	2 – 4 yrs	5 yrs +	0 – 24 mos	2 – 4 yrs	5 yrs +
Traditional Hours	22.00	20.00	20.00	<i>20.00</i>	<i>18.00</i>	<i>16.00</i>	19.75	18.00	19.50
Non-Traditional Hours	22.75	20.00	18.00	<i>19.00</i>	<i>19.00</i>	<i>17.00</i>	20.00	20.00	20.00
Central	Type I			Type II			Certified Home		
	0 – 24 mos	2 – 4 yrs	5 yrs +	0 – 24 mos	2 – 4 yrs	5 yrs +	0 – 24 mos	2 – 4 yrs	5 yrs +
Traditional Hours	32.50	29.00	24.00	26.00	25.00	24.50	25.00	25.00	22.00
Non-Traditional Hours	27.00	25.00	22.75	24.63	24.25	<i>23.00</i>	26.00	25.00	20.00
West	Type I			Type II			Certified Home		
	0 – 24 mos	2 – 4 yrs	5 yrs +	0 – 24 mos	2 – 4 yrs	5 yrs +	0 – 24 mos	2 – 4 yrs	5 yrs +
Traditional Hours	23.00	22.00	19.00	20.00	20.00	20.00	20.00	20.00	18.75
Non-Traditional Hours	22.50	20.00	19.00	<i>20.25</i>	<i>19.00</i>	<i>17.50</i>	19.00	18.00	16.50

Rates are italicized when the number of facilities reporting is less than 10.

Table 36. Part-Time Child Care Rates by Non-Traditional Hours (75th Percentile)

Statewide	Type I			Type II			Certified Home		
	0 – 24 mos	2 – 4 yrs	5 yrs +	0 – 24 mos	2 – 4 yrs	5 yrs +	0 – 24 mos	2 – 4 yrs	5 yrs +
Traditional Hours	26.50	22.00	19.75	22.00	20.25	<i>25.00</i>	20.00	20.00	20.00
Non-Traditional Hours	20.00	20.00	16.00	17.00	19.75	<i>26.00</i>	18.00	17.00	15.75
East	Type I			Type II			Certified Home		
	0 – 24 mos	2 – 4 yrs	5 yrs +	0 – 24 mos	2 – 4 yrs	5 yrs +	0 – 24 mos	2 – 4 yrs	5 yrs +
Traditional Hours	18.00	17.00	15.00	<i>20.50</i>	<i>19.50</i>	<i>15.00</i>	15.00	15.00	<i>14.25</i>
Non-Traditional Hours	16.00	14.00	13.25	<i>17.00</i>	<i>17.00</i>	-	14.25	12.00	<i>16.25</i>
Central	Type I			Type II			Certified Home		
	0 – 24 mos	2 – 4 yrs	5 yrs +	0 – 24 mos	2 – 4 yrs	5 yrs +	0 – 24 mos	2 – 4 yrs	5 yrs +
Traditional Hours	30.00	25.00	20.00	24.50	20.00	<i>25.00</i>	24.00	23.50	33.25
Non-Traditional Hours	24.00	22.00	17.00	16.25	<i>20.00</i>	<i>32.00</i>	19.50	18.00	17.00
West	Type I			Type II			Certified Home		
	0 – 24 mos	2 – 4 yrs	5 yrs +	0 – 24 mos	2 – 4 yrs	5 yrs +	0 – 24 mos	2 – 4 yrs	5 yrs +
Traditional Hours	23.00	18.00	16.00	22.25	<i>23.00</i>	<i>5.00</i>	15.00	15.00	<i>15.25</i>
Non-Traditional Hours	17.00	16.00	17.00	<i>17.00</i>	<i>20.00</i>	<i>20.00</i>	17.75	16.00	<i>15.00</i>

Rates are italicized when the number of facilities reporting is less than 10.

Children with Disabilities. Descriptive analyses were conducted to look at facilities that are currently providing care to children with disabilities. The percent disabled was calculated by dividing the number of children indicated as disabled by the total enrolled. No definition of disability was provided. Table 37 and Table 38 provide the percent and number statewide and by region.

Table 37. Percent (and number) of Facilities Currently Serving Children with Disabilities

	All Facilities	Type I	Type II	Certified Homes
Statewide	32.8 (604)	37.2 (546)	16.7 (14)	15.1 (44)
East	36.3 (91)	44.3 (86)	26.7 (4)	2.4 (1)
Central	31.0 (347)	34.8 (309)	15.2 (7)	16.7 (31)
West	35.2 (166)	36.2 (151)	13.0 (3)	18.8 (12)

Table 38. Percent and Number of Children with Disabilities by Age

	All Facilities		Type I		Type II		Certified Homes	
	Percent	Number	Percent	Number	Percent	Number	Percent	Number
Statewide								
Infant	1.5%	93	1.4%	84	0.0%	0	3.6%	9
Toddler	2.7%	409	2.5%	363	1.4%	4	5.7%	42
Preschool	4.3%	1543	4.2%	1497	3.7%	13	6.8%	33
School Age	4.1%	1293	4.0%	1219	3.5%	9	10.5%	65
East								
Infant	1.3%	8	1.3%	7	0.0%	0	3.2%	1
Toddler	2.7%	46	2.6%	40	1.5%	1	5.0%	5
Preschool	6.5%	273	6.7%	271	4.4%	2	0.0%	0
School Age	7.0%	194	7.3%	191	5.2%	3	0.0%	0
Central								
Infant	1.3%	54	1.3%	49	0.0%	0	2.8%	5
Toddler	2.7%	275	2.6%	244	1.2%	2	6.5%	29
Preschool	4.1%	956	4.1%	926	3.4%	6	7.5%	24
School Age	3.8%	779	0.4%	725	1.7%	2	12.8%	52
West								
Infant	1.9%	31	1.8%	28	0.0%	0	7.0%	3
Toddler	2.4%	88	2.3%	79	1.8%	1	4.4%	8
Preschool	3.6%	314	3.5%	300	3.9%	5	8.2%	9
School Age	4.0%	320	3.9%	303	5.0%	4	11.0%	13

Diverse Population. Descriptive analysis was conducted to look at facilities who provided care to a diverse population of children. The percent minority was calculated by dividing the number of children indicated as minority by the total enrolled. Categories used included Black/African-American, Hispanic/Latino, Asian, and Multi-Racial. An ‘other’ category was provided, however many survey respondents included the number of Caucasian/white children in this category, thus the category was not included in the analysis. When the percent minority was greater than 0, the minority variable was given a label of 1. Table 39 and Table 40 provide the percent and number statewide and by region. Statewide, demographics were reported as African-American 11.5% (n= 10253), Hispanic 3.2% (n= 2845), Asian 1.5% (n= 1345), Multi-Racial 5.7% (n= 5031) and Other 8.8% (n= 7825).

Table 39. Facilities Currently Serving a Diverse Population (Percent and Number)

	All Facilities	Type I	Type II	Certified Homes
Statewide	73.1 (1347)	80.3 (1177)	52.4 (44)	43.2 (126)
East	53.4 (134)	63.4 (123)	26.7 (4)	16.7 (7)
Central	76.4 (855)	83.5 (741)	54.3 (25)	47.8 (89)
West	75.8 (358)	81.3 (313)	65.2 (15)	46.9 (30)

Table 40. Percent and Number of Diverse Children by Age

	All Facilities		Type I		Type II		Certified Homes	
	Percent	Number	Percent	Number	Percent	Number	Percent	Number
Statewide								
Infant	28.9%	1803	2.8%	1676	22.9%	25	40.6%	102
Toddler	25.3%	3896	25.1%	3617	18.7%	53	30.8%	226
Preschool	18.2%	6591	18.0%	6355	21.8%	76	33.1%	160
School Age	23.0%	7184	22.6%	6844	29.3%	75	44.3%	275
East								
Infant	23.7%	142	25.5%	138	7.7%	2	6.5%	2
Toddler	8.7%	147	10.7%	163	7.7%	5	5.9%	6
Preschool	8.5%	356	8.6%	350	8.9%	4	3.6%	2
School Age	7.2%	202	7.0%	185	12.1%	7	10.2%	10
Central								
Infant	29.9%	1209	29.1%	1109	25.4%	15	48.0%	85
Toddler	27.8%	2782	27.3%	2567	25.2%	41	38.8%	174
Preschool	20.2%	4722	20.0%	4558	28.7%	50	35.8%	114
School Age	26.3%	5390	25.8%	5146	29.7%	35	51.6%	209
West								
Infant	28.3%	452	28.0%	429	33.3%	8	34.9%	15
Toddler	26.0%	967	26.2%	914	12.5%	7	25.1%	46
Preschool	17.4%	1513	17.1%	1447	17.1%	22	40.0%	44
School Age	20.1%	1592	19.5%	1503	41.3%	33	47.5%	56

Limitations

Several limitations should be considered when reviewing the findings from this study. First, comparative data used from the 2005 Market Rate Study were gathered through a different organization and original data were not available for review. Therefore, the comparative analysis that includes 2005 data is based on final report only.

A lower portion of providers accepting child care subsidy funds responded in the 2011 Market Rate Study than the 2009, which may have impacted the overall rates reported and the comparison across years. This is despite a 1% increase in the total population of child care facilities statewide since the 2009 study.

Recommendations

The following recommendations are provided.

- Additional consideration should be given to ways in which information can be gathered from registered providers in the Market Rate Study, perhaps by requiring rate information when registering for state subsidies.
- While the response rate of 65% is deemed acceptable by national standards, targeting facilities who did not respond would increase the level of confidence in the findings related to the child care rates in Kentucky.
- The Cabinet for Health and Family Services should consider an update of the state child care subsidy reimbursement rate to reflect the 75th percentile of the current cost of child care throughout Kentucky.

Appendices

Appendix 1: Copy of Paper Survey

Facility Information

If any of the following information is incorrect, please cross out the incorrect information and write-in the correct information to the right.

Facility Name		Facility Type	(Type I, Type II, Certified Home, Registered Provider)
License/Certification Number		Director Name	
Address		Name of person completing this form	
City, State Zip		Phone of person completing this form	
County		Email	

Hours of Operation

	Open (please CIRCLE AM or PM)	Close (please CIRCLE AM or PM)
Monday	AM PM	AM PM
Tuesday	AM PM	AM PM
Wednesday	AM PM	AM PM
Thursday	AM PM	AM PM
Friday	AM PM	AM PM
Saturday	AM PM	AM PM
Sunday	AM PM	AM PM

Number of Children Enrolled

In the table below, please enter the number of children who are currently enrolled in your facility in that age group, and the number of empty seats (or slots) you have in that age group.

	Number of children currently enrolled	Number of empty seats/slots	What age(s) do you consider this group? (circle as many as apply)			
Infants			Under 1	1 year	2 year	
Toddlers			1 year	2 year	3 year	
Preschool			2 year	3 year	4 year	5 year
School Age			3 year	4 year	5 year	6 years +

2011 Kentucky Child Care Market Rate Study

Child Care Prices

In the table below, please enter the price charged per child. Beside the price, please indicate how that price is charged. An example is provided. If you intend to change your price within the next 3 months, please indicate the new rate.

EXAMPLE

	Price	Charged					
Infant	\$20.00	<input type="checkbox"/> Hour	<input type="checkbox"/> Day	<input checked="" type="checkbox"/> Week	<input type="checkbox"/> Month	Other: fill in _____	
Toddler	\$15.00	<input type="checkbox"/> Hour	<input type="checkbox"/> Day	<input checked="" type="checkbox"/> Week	<input type="checkbox"/> Month	Other: fill in _____	
Preschool	\$35.00	<input type="checkbox"/> Hour	<input type="checkbox"/> Day	<input type="checkbox"/> Week	<input checked="" type="checkbox"/> Month	Other: fill in _____	
School Age	\$265.00	<input type="checkbox"/> Hour	<input type="checkbox"/> Day	<input type="checkbox"/> Week	<input type="checkbox"/> Month	Other: fill in <u>Semester</u>	

In the example above, \$20.00 is charged a week for Infant care, \$15.00 is charged a week for Toddler care, \$35.00 is charged a month for preschool care, and \$265 is charged per semester for school aged care.

Full-Time Care (5 or more hours a day)

	Price	Charged					
Infant		<input type="checkbox"/> Hour	<input type="checkbox"/> Day	<input type="checkbox"/> Week	<input type="checkbox"/> Month	Other: fill in _____	
Toddler		<input type="checkbox"/> Hour	<input type="checkbox"/> Day	<input type="checkbox"/> Week	<input type="checkbox"/> Month	Other: fill in _____	
Preschool		<input type="checkbox"/> Hour	<input type="checkbox"/> Day	<input type="checkbox"/> Week	<input type="checkbox"/> Month	Other: fill in _____	
School Age		<input type="checkbox"/> Hour	<input type="checkbox"/> Day	<input type="checkbox"/> Week	<input type="checkbox"/> Month	Other: fill in _____	
• Before and After School		<input type="checkbox"/> Hour	<input type="checkbox"/> Day	<input type="checkbox"/> Week	<input type="checkbox"/> Month	Other: fill in _____	
• Summer only		<input type="checkbox"/> Hour	<input type="checkbox"/> Day	<input type="checkbox"/> Week	<input type="checkbox"/> Month	Other: fill in _____	

Part-Time Care (less than 5 hours a day)

	Price	Charged					
Infant		<input type="checkbox"/> Hour	<input type="checkbox"/> Day	<input type="checkbox"/> Week	<input type="checkbox"/> Month	Other: fill in _____	
Toddler		<input type="checkbox"/> Hour	<input type="checkbox"/> Day	<input type="checkbox"/> Week	<input type="checkbox"/> Month	Other: fill in _____	
Preschool		<input type="checkbox"/> Hour	<input type="checkbox"/> Day	<input type="checkbox"/> Week	<input type="checkbox"/> Month	Other: fill in _____	
School Age		<input type="checkbox"/> Hour	<input type="checkbox"/> Day	<input type="checkbox"/> Week	<input type="checkbox"/> Month	Other: fill in _____	
• Before and After School		<input type="checkbox"/> Hour	<input type="checkbox"/> Day	<input type="checkbox"/> Week	<input type="checkbox"/> Month	Other: fill in _____	
• Before-school only		<input type="checkbox"/> Hour	<input type="checkbox"/> Day	<input type="checkbox"/> Week	<input type="checkbox"/> Month	Other: fill in _____	
• After-school only		<input type="checkbox"/> Hour	<input type="checkbox"/> Day	<input type="checkbox"/> Week	<input type="checkbox"/> Month	Other: fill in _____	
• Summer only		<input type="checkbox"/> Hour	<input type="checkbox"/> Day	<input type="checkbox"/> Week	<input type="checkbox"/> Month	Other: fill in _____	

Please check any of the following that apply to your facility:

- | | |
|---|---|
| <input type="checkbox"/> Employer financial assistance accepted | <input type="checkbox"/> Faith-based facility |
| <input type="checkbox"/> Part-week payment accepted | <input type="checkbox"/> Head Start Center providing wrap-around care |
| <input type="checkbox"/> Drop-In care provided | <input type="checkbox"/> Public preschool providing licensed before/after school care |
| <input type="checkbox"/> For-Profit/Private Child Care | |
| <input type="checkbox"/> Not-For-Profit Child Care | |

Are you nationally accredited by any of the following organizations? If so, please indicate.

- | | |
|---|--|
| <input type="checkbox"/> National Association for the Education of Young Children (NAEYC) | <input type="checkbox"/> National Association of Family Child Care (NAFCC) |
| | <input type="checkbox"/> National After-School Association (NAA) |

Do you accept child care subsidy payments from the state?

- | | |
|------------------------------|-----------------------------|
| <input type="checkbox"/> Yes | <input type="checkbox"/> No |
|------------------------------|-----------------------------|

If yes, how many children do you currently have enrolled on state subsidies?

Number of children for whom I accept subsidy payments.			
Infants		Preschool	
Toddlers		School-Age	

Child and Family Information

Please enter the number of children enrolled in your facility who meet the following criteria. If none, enter 0.

Number of children with disabilities			
Infants		Preschool	
Toddlers		School-Age	

Number of children from diverse racial backgrounds					
	Black/African American	Hispanic/Latino	Asian	Multi-Racial	Other
Infants					
Toddlers					
Preschool					
School-Age					

	Number of children who are non-English speaking	Number of children from non-English speaking homes (parents or guardians do not speak English)
Infants		
Toddlers		
Preschool		
School-Age		

Staff Information

Number of staff who have that have the following?					
Infant/Toddler CDA		Preschool CDA		School-Age CDA	

For completing and submitting this survey form, would you like to be entered the drawing for a box of early childhood materials worth up to \$50?

Yes

No

Appendix 2: Copy of Online Survey

2011 Kentucky Child Care Market Rate Study Licensed & Certified Family

Facility Information

*** Provider Type:**

- Type I Licensed Facility
- Type II Licensed Facility
- Certified Family Home

*** Please complete the following information regarding your facility. Much of this information was provided in the email you received.**

Facility/Home Name

License/Certification Number

Address:

Address 2:

City/Town:

State:

ZIP

Owner/Director Name:

*** Name of person completing this form:**

*** Phone of person completing this form. Please format XXX-XXX-XXXX:**

*** Email of person completing this form:**

If you have any questions about the Kentucky Market Rate Survey, or how to complete the form, please contact the Kentucky Partnership for Early Childhood Services at (800) 956-8950 or email tammy.gross@uky.edu.

Hours of Operation

Please indicate the time you OPEN and CLOSE for each day of the week. Please choose closest HOUR to your actual opening or closing time.

	Open	Close
Monday	<input type="text"/>	<input type="text"/>
Tuesday	<input type="text"/>	<input type="text"/>
Wednesday	<input type="text"/>	<input type="text"/>
Thursday	<input type="text"/>	<input type="text"/>
Friday	<input type="text"/>	<input type="text"/>
Saturday	<input type="text"/>	<input type="text"/>
Sunday	<input type="text"/>	<input type="text"/>

2011 Kentucky Child Care Market Rate Study Licensed & Certified Family

If you have any questions about the Kentucky Market Rate Survey, or how to complete the form, please contact the Kentucky Partnership for Early Childhood Services at (800) 956-8950 or email tammy.gross@uky.edu.

Number of Children Enrolled

Definition of Age: What age(s) do YOU (or your facility/home) consider this group? (check as many as apply)

	Under 1	1 year	2 year	3 year	4 year	5 year	6 year +
Infants	<input type="checkbox"/>	<input type="checkbox"/>	<input type="checkbox"/>	<input type="checkbox"/>	<input type="checkbox"/>	<input type="checkbox"/>	<input type="checkbox"/>
Toddlers	<input type="checkbox"/>	<input type="checkbox"/>	<input type="checkbox"/>	<input type="checkbox"/>	<input type="checkbox"/>	<input type="checkbox"/>	<input type="checkbox"/>
Preschool	<input type="checkbox"/>	<input type="checkbox"/>	<input type="checkbox"/>	<input type="checkbox"/>	<input type="checkbox"/>	<input type="checkbox"/>	<input type="checkbox"/>
School Age	<input type="checkbox"/>	<input type="checkbox"/>	<input type="checkbox"/>	<input type="checkbox"/>	<input type="checkbox"/>	<input type="checkbox"/>	<input type="checkbox"/>

In the table below, please enter the number of children who are currently enrolled in your facility by age group, and the number of empty seats (or slots) you have in that age group.

Using the definition you gave above, please enter the number of children currently enrolled in each age category.

Infants	<input type="text"/>
Toddlers	<input type="text"/>
Preschool	<input type="text"/>
School Age	<input type="text"/>

Using the definition you gave above, please enter the number of empty seats/slots in each age category.

Infants	<input type="text"/>
Toddlers	<input type="text"/>
Preschool	<input type="text"/>
School Age	<input type="text"/>

If you have any questions about the Kentucky Market Rate Survey, or how to complete the form, please contact the Kentucky Partnership for Early Childhood Services at (800) 956-8950 or email tammy.gross@uky.edu.

Child Care Prices

FULL TIME FEES: In the table below, please enter the price charged per child. Beside the price, please indicate how that price is charged. An example is provided. If you intend to change your price within the next 3 months, please indicate the new rate.

EXAMPLE:

	Price	Charged
Infant	\$25 <input type="text"/>	Day <input type="text"/>
Toddler	\$110 <input type="text"/>	Week <input type="text"/>
Preschool	\$80 <input type="text"/>	Week <input type="text"/>

2011 Kentucky Child Care Market Rate Study Licensed & Certified Family

Full Time Care (5 OR MORE HOURS PER DAY)

	Price	Charged
Infant	<input type="text"/>	<input type="text"/>
Toddler	<input type="text"/>	<input type="text"/>
Preschool	<input type="text"/>	<input type="text"/>

If you choose other, please specify how this price is charged:

Full Time Care (5 OR MORE HOURS A DAY)

	Price	Charged
School Age	<input type="text"/>	<input type="text"/>
School Age (Summer Only)	<input type="text"/>	<input type="text"/>

If you choose other, please specify how this price is charged:

If you have any questions about the Kentucky Market Rate Survey, or how to complete the form, please contact the Kentucky Partnership for Early Childhood Services at (800) 956-8950 or email tammy.gross@uky.edu.

Child Care Prices

PART TIME FEES: In the table below, please enter the price charged per child. Beside the price, please indicate how that price is charged. An example is provided. If you intend to change your price within the next 3 months, please indicate the new rate.

EXAMPLE:

	Price	Charged
Infant	\$25 <input type="text"/>	Day <input type="text"/>
Toddler	\$110 <input type="text"/>	Week <input type="text"/>
Preschool	\$80 <input type="text"/>	Week <input type="text"/>

Part Time Care (LESS THAN 5 HOURS A DAY)

	Price	Charged
Infant	<input type="text"/>	<input type="text"/>
Toddler	<input type="text"/>	<input type="text"/>
Preschool	<input type="text"/>	<input type="text"/>

If you choose other, please specify how this price is charged:

2011 Kentucky Child Care Market Rate Study Licensed & Certified Family

Part Time Care (LESS THAN 5 HOURS A DAY)

	Price	Charged
School Age	<input type="text"/>	<input type="text"/>
School Age (Summer Only)	<input type="text"/>	<input type="text"/>
School Age (Before and After School)	<input type="text"/>	<input type="text"/>

If you choose other, please specify how this price is charged:

Part Time Care (LESS THAN 5 HOURS A DAY)

	Price	Charged
School Age Before-school only	<input type="text"/>	<input type="text"/>
School Age After-school only	<input type="text"/>	<input type="text"/>

If you choose other, please specify how this price is charged:

If you have any questions about the Kentucky Market Rate Survey, or how to complete the form, please contact the Kentucky Partnership for Early Childhood Services at (800) 956-8950 or email tammy.gross@uky.edu.

Additional Information

Please check any of the following that apply to your facility:

- | | |
|---|---|
| <input type="checkbox"/> Employer financial assistance accepted | <input type="checkbox"/> Not-For-Profit Child Care |
| <input type="checkbox"/> Part-week payment accepted | <input type="checkbox"/> Faith-based facility |
| <input type="checkbox"/> Drop-In care provided | <input type="checkbox"/> Head Start Center providing wrap-around care |
| <input type="checkbox"/> For-Profit/Private Child Care | <input type="checkbox"/> Public preschool providing licensed before/after school care |

Are you nationally accredited by any of the following organizations? If so, please indicate.

- National Association for the Education of Young Children (NAEYC)
- National Association of Family Child Care (NAFCC)
- National After-School Association (NAA)

If you have any questions about the Kentucky Market Rate Survey, or how to complete the form, please contact the Kentucky Partnership for Early Childhood Services at (800) 956-8950 or email tammy.gross@uky.edu.

Child Care Subsidy

2011 Kentucky Child Care Market Rate Study Licensed & Certified Family

Do you accept child care subsidy payments from the state?

- Yes
 No

If you have any questions about the Kentucky Market Rate Survey, or how to complete the form, please contact the Kentucky Partnership for Early Childhood Services at (800) 956-8950 or email tammy.gross@uky.edu.

Child Care Subsidy

How many children do you currently have enrolled on state subsidies?

Number of children for whom I accept subsidy payments.

Infants	<input type="text"/>
Toddlers	<input type="text"/>
Preschool	<input type="text"/>
School-Age	<input type="text"/>

If you have any questions about the Kentucky Market Rate Survey, or how to complete the form, please contact the Kentucky Partnership for Early Childhood Services at (800) 956-8950 or email tammy.gross@uky.edu.

Child and Family Information

Please enter the number of children enrolled in your facility/family home who meet the following criteria. If none, enter 0.

Number of children with disabilities.

Infants	<input type="text"/>
Toddlers	<input type="text"/>
Preschool	<input type="text"/>
School-Age	<input type="text"/>

Number of children from diverse racial backgrounds.

	Black/African American	Hispanic/Latino	Asian	Multi-Racial	Other
Infants	<input type="text"/>	<input type="text"/>	<input type="text"/>	<input type="text"/>	<input type="text"/>
Toddlers	<input type="text"/>	<input type="text"/>	<input type="text"/>	<input type="text"/>	<input type="text"/>
Preschool	<input type="text"/>	<input type="text"/>	<input type="text"/>	<input type="text"/>	<input type="text"/>
School-Age	<input type="text"/>	<input type="text"/>	<input type="text"/>	<input type="text"/>	<input type="text"/>

2011 Kentucky Child Care Market Rate Study Licensed & Certified Family

Please enter the number of non-English speaking children or families.

	Number of children who are non-English speaking	Number of children from non-English speaking homes (parents or guardians do not speak English)
Infants	<input type="text"/>	<input type="text"/>
Toddlers	<input type="text"/>	<input type="text"/>
Preschool	<input type="text"/>	<input type="text"/>
School-Age	<input type="text"/>	<input type="text"/>

Staff Information

Please indicate the number of staff that have the following:

Infant/Toddler CDA	<input type="text"/>
Preschool CDA	<input type="text"/>
School-Age CDA	<input type="text"/>

If you have any questions about the Kentucky Market Rate Survey, or how to complete the form, please contact the Kentucky Partnership for Early Childhood Services at (800) 956-8950 or email tammy.gross@uky.edu.

Thank You

Thank you for taking time to assist us in this important study. Clicking Finish will complete the survey.

For completing and submitting this survey form, would you like to be entered in the drawing for a box of early childhood materials valued at up to \$50?

- Yes
 No

If you have any questions about the Kentucky Market Rate Survey, or how to complete the form, please contact the Kentucky Partnership for Early Childhood Services at (800) 956-8950 or email tammy.gross@uky.edu.

Appendix 3: Additional Tables**Table A.1. STAR and Subsidy Participation Full-Time Rates (75th Percentile)**

Statewide		Type I			Type II			Certified Home		
		0 – 24 mos	2 – 4 yrs	5 yrs +	0 – 24 mos	2 – 4 yrs	5 yrs +	0 – 24 mos	2 – 4 yrs	5 yrs +
Accepts Subsidy	STAR Rated	28.00	25.00	24.00	21.75	21.75	22.50	25.00	23.00	20.00
	Not STAR Rated	28.78	26.00	22.00	25.00	24.00	21.00	24.24	22.00	20.00
No Subsidy	STAR Rated	22.70	20.25	19.65	-	-	-	25.00	25.00	-
	Not STAR Rated	35.14	22.43	22.00	30.50	30.50	18.00	28.25	28.50	25.00
East		Type I			Type II			Certified Home		
		0 – 24 mos	2 – 4 yrs	5 yrs +	0 – 24 mos	2 – 4 yrs	5 yrs +	0 – 24 mos	2 – 4 yrs	5 yrs +
Accepts Subsidy	STAR Rated	22.50	20.00	18.00	19.00	19.00	17.00	21.50	19.50	19.00
	Not STAR Rated	21.63	20.00	19.00	20.00	17.25	16.00	20.00	19.50	20.00
No Subsidy	STAR Rated	23.60	20.00	20.00	-	-	-	-	-	-
	Not STAR Rated	13.00	15.40	-	-	-	-	19.00	18.00	20.00
Central		Type I			Type II			Certified Home		
		0 – 24 mos	2 – 4 yrs	5 yrs +	0 – 24 mos	2 – 4 yrs	5 yrs +	0 – 24 mos	2 – 4 yrs	5 yrs +
Accepts Subsidy	STAR Rated	31.75	28.00	24.00	24.50	24.75	25.00	26.00	26.00	22.00
	Not STAR Rated	31.50	28.40	24.00	26.00	25.00	22.75	25.00	24.30	20.50
No Subsidy	STAR Rated	-	20.10	-	-	-	-	25.00	25.00	-
	Not STAR Rated	35.68	27.50	22.46	32.00	32.00	-	29.00	30.00	29.50
West		Type I			Type II			Certified Home		
		0 – 24 mos	2 – 4 yrs	5 yrs +	0 – 24 mos	2 – 4 yrs	5 yrs +	0 – 24 mos	2 – 4 yrs	5 yrs +
Accepts Subsidy	STAR Rated	23.00	21.85	20.00	20.00	20.00	20.00	20.00	19.25	17.25
	Not STAR Rated	23.70	22.00	19.00	20.00	19.00	16.00	19.00	19.00	18.00
No Subsidy	STAR Rated	20.00	20.75	18.60	-	-	-	-	-	-
	Not STAR Rated	20.00	22.00	22.00	20.00	20.00	18.00	23.50	23.50	24.00

Table A. 2. STAR and Subsidy Participation Part-Time Rates (75th Percentile)

Statewide		Type I			Type II			Certified Home		
		0 – 24 mos	2 – 4 yrs	5 yrs +	0 – 24 mos	2 – 4 yrs	5 yrs +	0 – 24 mos	2 – 4 yrs	5 yrs +
Accepts Subsidy	STAR Rated	25.00	21.00	16.00	16.75	17.25	23.00	20.00	19.25	18.00
	Not STAR Rated	27.00	23.00	20.00	23.00	20.00	28.50	20.00	17.75	19.00
No Subsidy	STAR Rated	<i>15.00</i>	17.00	<i>15.00</i>	-	-	-	-	-	-
	Not STAR Rated	20.50	14.13	21.25	-	-	-	28.00	28.00	28.00
East		Type I			Type II			Certified Home		
		0 – 24 mos	2 – 4 yrs	5 yrs +	0 – 24 mos	2 – 4 yrs	5 yrs +	0 – 24 mos	2 – 4 yrs	5 yrs +
Accepts Subsidy	STAR Rated	18.75	17.50	<i>13.50</i>	17.00	17.00	-	17.00	15.75	18.00
	Not STAR Rated	18.00	17.00	14.00	20.75	21.00	15.00	14.00	14.00	11.75
No Subsidy	STAR Rated	16.00	20.00	15.00	-	-	-	-	-	-
	Not STAR Rated	7.00	10.52	-	-	-	-	-	-	-
Central		Type I			Type II			Certified Home		
		0 – 24 mos	2 – 4 yrs	5 yrs +	0 – 24 mos	2 – 4 yrs	5 yrs +	0 – 24 mos	2 – 4 yrs	5 yrs +
Accepts Subsidy	STAR Rated	27.25	24.00	15.75	16.00	15.00	25.00	20.00	20.00	20.00
	Not STAR Rated	30.00	25.00	21.25	25.00	20.00	32.00	22.00	20.00	31.00
No Subsidy	STAR Rated	10.00	31.00	-	-	-	-	-	-	-
	Not STAR Rated	22.75	15.60	24.00	-	-	-	28.00	28.00	28.00
West		Type I			Type II			Certified Home		
		0 – 24 mos	2 – 4 yrs	5 yrs +	0 – 24 mos	2 – 4 yrs	5 yrs +	0 – 24 mos	2 – 4 yrs	5 yrs +
Accepts Subsidy	STAR Rated	21.00	16.85	18.50	17.00	21.75	15.00	18.50	15.50	15.00
	Not STAR Rated	21.25	18.00	15.00	22.50	21.25	20.00	15.00	15.25	16.00
No Subsidy	STAR Rated	14.00	14.60	-	-	-	-	-	-	-
	Not STAR Rated	14.00	14.00	12.00	-	-	-	12.00	12.00	-

Rates are italicized when the number of facilities is less than 10.

Table A. 3. Child Care Rate Range by Region, Urbanicity and Facility Type - 65th to 75th Percentile

75 th Percentile										
East		Type I			Type II			Certified Home		
		0 – 24 mos	2 – 4 yrs	5 yrs +	0 – 24 mos	2 – 4 yrs	5 yrs +	0 – 24 mos	2 – 4 yrs	5 yrs +
Urban	Full-Time	23.50	20.00	23.75	20.00	20.00	20.00	23.75	23.50	21.00
	Part-Time	20.00	18.00	17.00	-	-	-	17.25	16.50	18.00
Rural	Full-Time	22.00	19.00	18.00	19.00	18.00	16.00	19.25	18.00	20.00
	Part-Time	17.00	16.00	14.00	20.00	18.00	15.00	14.00	14.25	12.75
Central		Type I			Type II			Certified Home		
		0 – 24 mos	2 – 4 yrs	5 yrs +	0 – 24 mos	2 – 4 yrs	5 yrs +	0 – 24 mos	2 – 4 yrs	5 yrs +
Urban	Full-Time	26.50	24.00	21.00	25.50	24.50	23.25	26.63	25.00	22.00
	Part-Time	30.00	25.00	20.00	20.00	20.00	28.50	22.50	20.00	21.75
Rural	Full-Time	32.50	29.00	24.00	25.75	25.00	25.00	22.50	20.00	20.00
	Part-Time	25.00	24.00	17.00	25.00	20.00	-	19.50	17.00	26.00
West		Type I			Type II			Certified Home		
		0 – 24 mos	2 – 4 yrs	5 yrs +	0 – 24 mos	2 – 4 yrs	5 yrs +	0 – 24 mos	2 – 4 yrs	5 yrs +
Urban	Full-Time	24.00	23.00	20.00	20.00	20.00	17.00	20.00	19.25	18.50
	Part-Time	20.00	19.00	16.00	17.00	17.00	15.00	17.00	16.00	14.50
Rural	Full-Time	21.00	20.00	19.00	20.00	20.00	20.00	18.50	18.50	17.75
	Part-Time	22.50	15.00	18.75	20.00	21.50	20.00	15.00	15.00	16.00
74 th Percentile										
East		Type I			Type II			Certified Home		
		0 – 24 mos	2 – 4 yrs	5 yrs +	0 – 24 mos	2 – 4 yrs	5 yrs +	0 – 24 mos	2 – 4 yrs	5 yrs +
Urban	Full-Time	23.50	20.00	22.30	20.00	20.00	20.00	23.60	23.32	20.80
	Part-Time	20.00	18.00	16.72	-	-	-	17.10	16.20	18.00
Rural	Full-Time	22.00	19.00	18.00	19.00	18.00	16.00	19.00	18.00	20.00
	Part-Time	16.78	16.00	13.80	19.76	17.72	15.00	14.00	14.06	12.54
Central		Type I			Type II			Certified Home		
		0 – 24 mos	2 – 4 yrs	5 yrs +	0 – 24 mos	2 – 4 yrs	5 yrs +	0 – 24 mos	2 – 4 yrs	5 yrs +
Urban	Full-Time	32.06	29.00	24.00	25.20	24.20	23.02	26.00	25.00	22.00
	Part-Time	30.00	24.46	20.00	20.00	20.00	28.08	21.68	20.00	20.42
Rural	Full-Time	26.46	24.00	21.00	25.58	25.00	25.00	22.50	20.00	20.00
	Part-Time	25.00	24.00	16.64	25.00	19.40	-	19.16	16.64	25.60
West		Type I			Type II			Certified Home		
		0 – 24 mos	2 – 4 yrs	5 yrs +	0 – 24 mos	2 – 4 yrs	5 yrs +	0 – 24 mos	2 – 4 yrs	5 yrs +
Urban	Full-Time	24.00	23.00	19.00	20.00	20.00	17.00	20.00	19.00	18.20
	Part-Time	20.00	18.12	16.00	17.00	17.00	15.00	17.00	16.00	14.32
Rural	Full-Time	21.00	20.00	19.00	20.00	20.00	20.00	18.04	18.04	17.54
	Part-Time	21.68	15.00	17.70	19.40	21.20	20.00	15.00	15.00	16.00

Table A. 3. Child Care Rate Range by Region, Urbanicity and Facility Type - 65th to 75th Percentile (continued)

73 th Percentile										
East		Type I			Type II			Certified Home		
		0 – 24 mos	2 – 4 yrs	5 yrs +	0 – 24 mos	2 – 4 yrs	5 yrs +	0 – 24 mos	2 – 4 yrs	5 yrs +
Urban	Full-Time	23.50	20.00	20.85	20.00	20.00	20.00	23.45	23.14	20.60
	Part-Time	20.00	17.90	16.44	-	-	-	16.95	15.90	18.00
Rural	Full-Time	22.00	19.00	18.00	19.00	18.00	16.00	19.00	18.00	19.58
	Part-Time	16.31	16.00	13.60	19.52	17.44	15.00	14.00	14.00	12.33
Central		Type I			Type II			Certified Home		
		0 – 24 mos	2 – 4 yrs	5 yrs +	0 – 24 mos	2 – 4 yrs	5 yrs +	0 – 24 mos	2 – 4 yrs	5 yrs +
Urban	Full-Time	32.00	28.86	24.00	25.00	24.00	23.00	26.00	25.00	22.00
	Part-Time	29.57	23.40	20.00	20.00	20.00	27.66	20.86	20.00	20.00
Rural	Full-Time	26.00	23.52	20.78	25.41	25.00	25.00	22.25	20.00	20.00
	Part-Time	25.00	23.73	16.28	25.00	18.80	-	18.82	16.28	25.20
West		Type I			Type II			Certified Home		
		0 – 24 mos	2 – 4 yrs	5 yrs +	0 – 24 mos	2 – 4 yrs	5 yrs +	0 – 24 mos	2 – 4 yrs	5 yrs +
Urban	Full-Time	24.00	22.54	19.00	20.00	20.00	17.00	20.00	19.00	18.00
	Part-Time	20.00	18.00	16.00	17.00	17.00	15.00	16.87	15.87	14.14
Rural	Full-Time	21.00	20.00	19.00	20.00	20.00	19.90	18.00	18.00	17.33
	Part-Time	20.93	15.00	16.65	18.80	20.90	20.00	15.00	15.00	16.00
72 th Percentile										
East		Type I			Type II			Certified Home		
		0 – 24 mos	2 – 4 yrs	5 yrs +	0 – 24 mos	2 – 4 yrs	5 yrs +	0 – 24 mos	2 – 4 yrs	5 yrs +
Urban	Full-Time	23.50	20.00	20.00	20.00	20.00	20.00	23.30	22.96	20.40
	Part-Time	20.00	17.60	16.16	-	-	-	16.80	15.60	18.00
Rural	Full-Time	22.00	19.00	18.00	19.00	18.00	16.00	19.00	18.00	19.12
	Part-Time	16.00	15.48	13.40	19.28	17.16	15.00	14.00	14.00	12.12
Central		Type I			Type II			Certified Home		
		0 – 24 mos	2 – 4 yrs	5 yrs +	0 – 24 mos	2 – 4 yrs	5 yrs +	0 – 24 mos	2 – 4 yrs	5 yrs +
Urban	Full-Time	31.60	28.22	24.00	25.00	24.00	23.00	26.00	25.00	22.00
	Part-Time	28.48	23.00	20.00	20.00	20.00	27.24	20.04	20.00	20.00
Rural	Full-Time	26.00	23.00	20.00	25.24	25.00	24.60	22.00	20.00	20.00
	Part-Time	24.96	23.20	15.88	25.00	18.20	-	18.48	15.96	24.80
West		Type I			Type II			Certified Home		
		0 – 24 mos	2 – 4 yrs	5 yrs +	0 – 24 mos	2 – 4 yrs	5 yrs +	0 – 24 mos	2 – 4 yrs	5 yrs +
Urban	Full-Time	24.00	22.03	19.00	20.00	20.00	17.00	20.00	19.00	18.00
	Part-Time	19.64	18.00	16.00	17.00	17.00	15.00	16.68	15.68	13.96
Rural	Full-Time	21.00	20.00	19.00	20.00	20.00	19.60	18.00	18.00	17.12
	Part-Time	20.52	15.00	15.60	18.20	20.60	20.00	15.00	15.00	16.00

Table A.1. Child Care Rate Range by Region, Urbanicity and Facility Type - 65th to 75th Percentile (continued)

71 th Percentile										
East		Type I			Type II			Certified Home		
		0 – 24 mos	2 – 4 yrs	5 yrs +	0 – 24 mos	2 – 4 yrs	5 yrs +	0 – 24 mos	2 – 4 yrs	5 yrs +
Urban	Full-Time	23.08	20.00	20.00	20.00	20.00	20.00	23.15	22.78	20.20
	Part-Time	20.00	17.30	15.97	-	-	-	16.65	15.30	18.00
Rural	Full-Time	21.41	19.00	18.00	19.00	17.94	16.00	19.00	18.00	18.66
	Part-Time	16.00	15.00	13.20	19.04	16.94	15.00	14.00	14.00	11.97
Central		Type I			Type II			Certified Home		
		0 – 24 mos	2 – 4 yrs	5 yrs +	0 – 24 mos	2 – 4 yrs	5 yrs +	0 – 24 mos	2 – 4 yrs	5 yrs +
Urban	Full-Time	31.50	28.00	24.00	25.00	24.00	23.00	26.00	25.00	21.29
	Part-Time	28.00	22.88	20.00	19.84	19.84	26.82	20.00	20.00	20.00
Rural	Full-Time	26.00	23.00	20.00	25.07	25.00	24.05	22.00	20.00	20.00
	Part-Time	24.53	22.35	15.34	25.00	17.60	-	18.14	15.78	24.40
West		Type I			Type II			Certified Home		
		0 – 24 mos	2 – 4 yrs	5 yrs +	0 – 24 mos	2 – 4 yrs	5 yrs +	0 – 24 mos	2 – 4 yrs	5 yrs +
Urban	Full-Time	24.00	22.00	19.00	20.00	20.00	17.00	20.00	19.00	18.00
	Part-Time	19.02	18.00	16.00	17.00	17.00	15.00	16.49	15.49	13.78
Rural	Full-Time	21.00	20.00	19.00	20.00	20.00	19.30	18.00	18.00	16.91
	Part-Time	20.11	15.00	15.00	17.60	20.30	20.00	15.00	15.00	16.00
70 th Percentile										
East		Type I			Type II			Certified Home		
		0 – 24 mos	2 – 4 yrs	5 yrs +	0 – 24 mos	2 – 4 yrs	5 yrs +	0 – 24 mos	2 – 4 yrs	5 yrs +
Urban	Full-Time	22.60	20.00	20.00	20.00	20.00	20.00	23.00	22.60	20.00
	Part-Time	20.00	17.00	15.90	-	-	-	16.50	15.00	18.00
Rural	Full-Time	20.85	19.00	18.00	19.00	17.80	16.00	19.00	18.00	18.20
	Part-Time	16.00	15.00	13.00	18.80	16.80	15.00	14.00	14.00	11.90
Central		Type I			Type II			Certified Home		
		0 – 24 mos	2 – 4 yrs	5 yrs +	0 – 24 mos	2 – 4 yrs	5 yrs +	0 – 24 mos	2 – 4 yrs	5 yrs +
Urban	Full-Time	31.50	28.00	24.00	25.00	24.00	23.00	25.00	25.00	21.00
	Part-Time	28.00	22.40	20.00	19.80	19.80	26.40	20.00	20.00	20.00
Rural	Full-Time	26.00	23.00	20.00	25.00	25.00	23.50	22.00	20.00	20.00
	Part-Time	24.10	21.60	14.80	25.00	17.00	-	18.00	15.60	24.00
West		Type I			Type II			Certified Home		
		0 – 24 mos	2 – 4 yrs	5 yrs +	0 – 24 mos	2 – 4 yrs	5 yrs +	0 – 24 mos	2 – 4 yrs	5 yrs +
Urban	Full-Time	23.68	22.00	19.00	20.00	20.00	17.00	20.00	19.00	18.00
	Part-Time	19.00	17.60	16.00	17.00	17.00	15.00	16.30	15.30	13.60
Rural	Full-Time	21.00	20.00	19.00	20.00	19.80	19.00	18.00	18.00	16.70
	Part-Time	19.70	14.80	15.00	17.00	20.00	20.00	15.00	15.00	16.00

Table A.3. Child Care Rate Range by Region, Urbanicity and Facility Type - 65th to 75th Percentile (continued)

69 th Percentile										
East		Type I			Type II			Certified Home		
		0 – 24 mos	2 – 4 yrs	5 yrs +	0 – 24 mos	2 – 4 yrs	5 yrs +	0 – 24 mos	2 – 4 yrs	5 yrs +
Urban	Full-Time	22.12	20.00	20.00	20.00	20.00	20.00	22.85	22.42	19.80
	Part-Time	20.00	16.70	15.83	-	-	-	16.35	14.70	18.00
Rural	Full-Time	20.50	19.00	18.00	19.00	17.66	16.00	18.90	18.00	18.00
	Part-Time	16.00	15.00	12.80	18.56	16.66	15.00	14.00	14.00	11.83
Central		Type I			Type II			Certified Home		
		0 – 24 mos	2 – 4 yrs	5 yrs +	0 – 24 mos	2 – 4 yrs	5 yrs +	0 – 24 mos	2 – 4 yrs	5 yrs +
Urban	Full-Time	31.30	27.80	24.00	25.00	24.00	22.87	25.00	25.00	21.00
	Part-Time	28.00	22.00	20.00	19.66	19.66	25.98	20.00	20.00	20.00
Rural	Full-Time	26.00	23.00	20.00	25.00	25.00	22.95	22.00	20.00	19.20
	Part-Time	23.67	20.92	14.26	25.00	16.40	-	18.00	15.42	23.60
West		Type I			Type II			Certified Home		
		0 – 24 mos	2 – 4 yrs	5 yrs +	0 – 24 mos	2 – 4 yrs	5 yrs +	0 – 24 mos	2 – 4 yrs	5 yrs +
Urban	Full-Time	23.45	22.00	19.00	20.00	20.00	17.00	20.00	19.00	18.00
	Part-Time	19.00	17.00	15.80	17.00	17.00	15.00	16.11	15.11	13.42
Rural	Full-Time	21.00	20.00	18.41	20.00	19.46	18.70	18.00	18.00	16.49
	Part-Time	19.29	14.16	15.00	16.40	20.00	20.00	15.00	15.00	16.00
68 th Percentile										
East		Type I			Type II			Certified Home		
		0 – 24 mos	2 – 4 yrs	5 yrs +	0 – 24 mos	2 – 4 yrs	5 yrs +	0 – 24 mos	2 – 4 yrs	5 yrs +
Urban	Full-Time	22.00	20.00	19.72	20.00	20.00	20.00	22.70	22.24	19.60
	Part-Time	20.00	16.40	15.76	-	-	-	16.20	14.40	18.00
Rural	Full-Time	20.50	19.00	18.00	19.00	17.52	16.00	18.73	18.00	18.00
	Part-Time	16.00	15.00	12.60	18.32	16.52	15.00	14.00	13.84	11.76
Central		Type I			Type II			Certified Home		
		0 – 24 mos	2 – 4 yrs	5 yrs +	0 – 24 mos	2 – 4 yrs	5 yrs +	0 – 24 mos	2 – 4 yrs	5 yrs +
Urban	Full-Time	31.00	27.26	24.00	25.00	24.00	22.64	25.00	25.00	21.00
	Part-Time	27.00	22.00	19.48	19.52	19.52	25.56	20.00	20.00	20.00
Rural	Full-Time	26.00	23.00	20.00	25.00	25.00	22.40	22.00	20.00	18.40
	Part-Time	23.24	20.24	13.72	25.00	15.80	-	18.00	15.24	23.20
West		Type I			Type II			Certified Home		
		0 – 24 mos	2 – 4 yrs	5 yrs +	0 – 24 mos	2 – 4 yrs	5 yrs +	0 – 24 mos	2 – 4 yrs	5 yrs +
Urban	Full-Time	23.10	22.00	19.00	20.00	20.00	17.00	20.00	19.00	18.00
	Part-Time	19.00	16.90	15.60	17.00	17.00	15.00	15.92	14.92	13.24
Rural	Full-Time	20.64	20.00	18.00	20.00	19.12	18.40	18.00	18.00	16.28
	Part-Time	18.88	14.00	15.00	15.80	20.00	20.00	15.00	15.00	16.00

Table A. 3. Child Care Rate Range by Region, Urbanicity and Facility Type - 65th to 75th Percentile (continued)

67 th Percentile										
East		Type I			Type II			Certified Home		
		0 – 24 mos	2 – 4 yrs	5 yrs +	0 – 24 mos	2 – 4 yrs	5 yrs +	0 – 24 mos	2 – 4 yrs	5 yrs +
Urban	Full-Time	22.00	20.00	19.43	20.00	20.00	20.00	22.55	22.06	19.40
	Part-Time	20.00	16.10	15.69	-	-	-	16.05	14.10	18.00
Rural	Full-Time	20.50	18.28	17.55	19.00	17.38	16.00	18.73	18.00	18.00
	Part-Time	16.00	15.00	12.40	18.08	16.38	15.00	14.00	13.46	11.69
Central		Type I			Type II			Certified Home		
		0 – 24 mos	2 – 4 yrs	5 yrs +	0 – 24 mos	2 – 4 yrs	5 yrs +	0 – 24 mos	2 – 4 yrs	5 yrs +
Urban	Full-Time	31.00	27.00	24.00	25.00	24.00	22.41	25.00	25.00	21.00
	Part-Time	27.00	21.57	18.79	19.38	19.38	25.14	20.00	20.00	20.00
Rural	Full-Time	25.68	22.08	20.00	25.00	25.00	21.85	21.50	20.00	18.00
	Part-Time	22.81	20.00	13.18	25.00	15.20	-	18.00	15.06	22.80
West		Type I			Type II			Certified Home		
		0 – 24 mos	2 – 4 yrs	5 yrs +	0 – 24 mos	2 – 4 yrs	5 yrs +	0 – 24 mos	2 – 4 yrs	5 yrs +
Urban	Full-Time	23.00	22.00	19.00	20.00	20.00	17.00	20.00	19.00	18.00
	Part-Time	19.00	16.40	15.40	17.00	17.00	15.00	15.73	14.73	13.06
Rural	Full-Time	20.50	20.00	18.00	20.00	18.78	18.10	18.00	18.00	16.07
	Part-Time	18.47	14.00	15.00	15.20	20.00	20.00	15.00	15.00	16.00
66 th Percentile										
East		Type I			Type II			Certified Home		
		0 – 24 mos	2 – 4 yrs	5 yrs +	0 – 24 mos	2 – 4 yrs	5 yrs +	0 – 24 mos	2 – 4 yrs	5 yrs +
Urban	Full-Time	22.00	20.00	19.14	19.96	19.90	20.00	22.48	21.92	19.20
	Part-Time	19.58	16.00	15.62	-	-	-	15.90	13.80	17.69
Rural	Full-Time	20.43	18.00	17.00	19.00	17.24	16.00	18.55	18.00	18.00
	Part-Time	16.00	15.00	12.20	17.84	16.24	15.00	14.00	13.08	11.62
Central		Type I			Type II			Certified Home		
		0 – 24 mos	2 – 4 yrs	5 yrs +	0 – 24 mos	2 – 4 yrs	5 yrs +	0 – 24 mos	2 – 4 yrs	5 yrs +
Urban	Full-Time	30.49	27.00	24.00	25.00	24.00	22.18	25.00	25.00	20.34
	Part-Time	27.00	21.00	17.82	19.24	19.24	25.00	20.00	20.00	20.00
Rural	Full-Time	25.14	22.00	20.00	25.00	25.00	21.30	21.00	20.00	18.00
	Part-Time	22.38	20.00	13.00	24.60	14.84	-	18.00	14.76	22.40
West		Type I			Type II			Certified Home		
		0 – 24 mos	2 – 4 yrs	5 yrs +	0 – 24 mos	2 – 4 yrs	5 yrs +	0 – 24 mos	2 – 4 yrs	5 yrs +
Urban	Full-Time	23.00	22.00	18.55	20.00	19.96	16.98	19.87	19.00	17.80
	Part-Time	19.00	16.40	15.20	17.00	17.00	15.00	15.54	14.54	13.00
Rural	Full-Time	20.24	19.52	18.00	20.00	18.44	18.00	18.00	18.00	16.00
	Part-Time	18.06	14.00	14.86	14.96	20.00	19.70	15.00	15.00	15.92

Table A. 3. Child Care Rate Range by Region, Urbanicity and Facility Type - 65th to 75th Percentile (continued)

65 th Percentile										
East		Type I			Type II			Certified Home		
		0 – 24 mos	2 – 4 yrs	5 yrs +	0 – 24 mos	2 – 4 yrs	5 yrs +	0 – 24 mos	2 – 4 yrs	5 yrs +
Urban	Full-Time	21.90	20.00	19.00	<i>19.90</i>	<i>19.90</i>	<i>20.00</i>	<i>22.45</i>	<i>21.80</i>	<i>19.00</i>
	Part-Time	18.95	16.00	15.55	-	-	-	<i>15.75</i>	<i>13.50</i>	<i>17.22</i>
Rural	Full-Time	20.08	18.00	17.00	19.00	17.10	16.00	18.38	18.00	18.00
	Part-Time	16.00	15.00	12.00	<i>17.60</i>	<i>16.10</i>	<i>15.00</i>	14.00	12.70	<i>11.55</i>
Central		Type I			Type II			Certified Home		
		0 – 24 mos	2 – 4 yrs	5 yrs +	0 – 24 mos	2 – 4 yrs	5 yrs +	0 – 24 mos	2 – 4 yrs	5 yrs +
Urban	Full-Time	30.00	27.00	24.00	25.00	24.00	21.95	25.00	25.00	20.00
	Part-Time	26.00	20.97	17.40	19.10	19.10	<i>25.00</i>	20.00	20.00	20.00
Rural	Full-Time	25.00	22.00	20.00	25.00	25.00	20.75	21.00	20.00	18.00
	Part-Time	21.95	20.00	13.00	<i>24.00</i>	<i>14.60</i>	-	18.00	14.40	<i>22.00</i>
West		Type I			Type II			Certified Home		
		0 – 24 mos	2 – 4 yrs	5 yrs +	0 – 24 mos	2 – 4 yrs	5 yrs +	0 – 24 mos	2 – 4 yrs	5 yrs +
Urban	Full-Time	23.00	22.00	18.00	<i>20.00</i>	<i>19.90</i>	<i>16.95</i>	19.68	19.00	17.50
	Part-Time	19.00	16.08	15.00	<i>17.00</i>	<i>17.00</i>	<i>15.00</i>	15.35	14.35	<i>13.00</i>
Rural	Full-Time	20.04	19.00	18.00	20.00	18.10	18.00	17.98	17.95	16.00
	Part-Time	18.00	14.00	14.65	<i>14.90</i>	<i>20.00</i>	<i>19.25</i>	15.00	15.00	<i>15.80</i>

Rates are italicized when the number of facilities is less than 10.

Table A. 4. Child Care Enrollment and Desired Capacity - Statewide

	Number of Facilities	Average number of children	Std. Error of Mean	Std. Deviation
Infant Enrollment	958	6.52	0.20	6.22
Infant Desired Capacity	1010	8.09	0.23	7.17
Enrolled Toddler	1187	12.99	0.38	12.95
Toddler Desired Capacity	1210	15.57	0.44	15.27
Enrolled Preschool	1440	25.15	0.72	27.42
Preschool Desired Capacity	1470	29.81	0.83	31.77
Enrolled School Age	1219	25.57	0.89	30.91
School Age Desired Capacity	1245	35.91	1.33	46.95

Table A. 5. Rates by Area Development District (75th Percentile)

Full-Time									
	Type I			Type II			Certified Home		
	0 – 24 mos	2 – 4 yrs	5 yrs +	0 – 24 mos	2 – 4 yrs	5 yrs +	0 – 24 mos	2 – 4 yrs	5 yrs +
Barren River	24.00	22.25	19.75	18.00	16.00	16.50	19.25	19.25	19.00
Big Sandy	30.00	24.25	19.50	19.00	18.00	15.00	24.50	23.75	25.00
Bluegrass	30.00	26.05	21.00	26.38	25.00	25.00	26.00	25.00	25.00
Buffalo Trace	20.00	18.50	25.00	23.25	17.75	10.00	20.00	20.00	20.00
Cumberland Valley	20.38	20.00	18.50	19.00	19.00	17.00	18.50	17.00	17.00
Fivco	23.13	20.00	24.25	20.00	20.00	20.00	22.38	21.50	22.00
Gateway	22.88	18.75	18.00	18.00	18.00	16.00	19.00	18.00	20.00
Green River	23.00	21.85	18.00	19.00	22.00	22.00	23.75	23.50	20.00
Kentucky River	20.00	20.00	16.25	-	-	-	23.75	23.00	17.00
KIPDA	33.00	29.40	24.00	25.50	25.00	24.25	25.00	22.50	20.00
Lake Cumberland	23.75	21.00	20.00	25.00	22.00	21.50	19.00	17.00	16.88
Lincoln Trail	22.81	20.00	19.75	20.00	20.00	19.00	19.50	17.75	17.25
Northern KY	34.43	30.45	26.00	25.00	25.00	-	29.00	27.38	24.50
Pennyrile	22.50	20.00	19.00	20.50	20.00	23.75	20.00	19.00	18.00
Purchase	24.55	24.25	22.00	23.00	20.00	-	21.50	21.50	22.00
Part-Time									
	Type I			Type II			Certified Home		
	0 – 24 mos	2 – 4 yrs	5 yrs +	0 – 24 mos	2 – 4 yrs	5 yrs +	0 – 24 mos	2 – 4 yrs	5 yrs +
Barren River	19.75	16.50	8.00	15.00	18.75	-	15.00	12.00	12.00
Big Sandy	24.00	23.00	15.00	14.00	13.00	-	18.00	16.50	15.00
Bluegrass	25.00	19.18	16.00	24.50	21.00	-	26.50	25.00	26.00
Buffalo Trace	20.00	50.00	12.00	21.00	21.00	15.00	10.00	10.00	-
Cumberland Valley	16.50	15.00	14.00	17.00	17.00	-	14.00	12.00	10.75
Fivco	18.50	17.00	20.00	-	-	-	18.00	18.00	18.00
Gateway	18.00	15.00	10.75	-	-	-	-	-	-
Green River	23.75	20.00	21.25	-	18.00	-	15.00	15.00	-
Kentucky River	16.00	15.50	15.00	-	-	-	17.00	15.00	12.00
KIPDA	30.00	25.15	25.00	23.75	20.00	30.25	20.00	18.00	25.25
Lake Cumberland	18.00	15.00	11.50	18.00	15.25	25.00	17.00	15.00	-
Lincoln Trail	19.25	16.00	15.00	-	20.00	20.00	31.50	19.00	16.00
Northern KY	34.50	30.00	22.00	-	-	-	28.00	27.25	23.75
Pennyrile	24.00	16.00	17.00	25.00	25.00	15.00	17.00	16.00	14.50
Purchase	21.00	21.00	21.25	14.00	14.00	-	11.50	11.50	-

Table A. 6. Rates by Area Development District and STAR Rated (75th Percentile)

Full-Time										
Barren River		Type I			Type II			Certified Home		
		0 – 24 mos	2 – 4 yrs	5 yrs +	0 – 24 mos	2 – 4 yrs	5 yrs +	0 – 24 mos	2 – 4 yrs	5 yrs +
Full-Time	Not STAR Rated	24.50	23.00	20.00	18.00	18.00	15.00	19.75	19.75	22.00
	STAR Rated	20.00	20.50	18.05	17.50	16.00	18.00	17.00	17.00	17.00
Part-Time	Not STAR Rated	22.00	17.00	7.50	15.00	20.00	-	15.00	-	12.00
	STAR Rated	16.00	15.00	8.00	12.00	12.00	-	11.00	12.00	-
Big Sandy		Type I			Type II			Certified Home		
		0 – 24 mos	2 – 4 yrs	5 yrs +	0 – 24 mos	2 – 4 yrs	5 yrs +	0 – 24 mos	2 – 4 yrs	5 yrs +
Full-Time	Not STAR Rated	30.00	30.00	24.50	-	-	-	23.00	20.00	20.00
	STAR Rated	26.25	22.00	19.75	23.00	20.00	15.00	25.00	25.00	25.00
Part-Time	Not STAR Rated	25.00	22.00	9.00	-	-	-	19.00	17.00	11.00
	STAR Rated	24.25	24.25	15.00	14.00	13.00	-	15.00	15.00	15.00
Bluegrass		Type I			Type II			Certified Home		
		0 – 24 mos	2 – 4 yrs	5 yrs +	0 – 24 mos	2 – 4 yrs	5 yrs +	0 – 24 mos	2 – 4 yrs	5 yrs +
Full-Time	Not STAR Rated	31.00	27.00	23.00	26.38	25.00	24.00	26.00	25.00	25.00
	STAR Rated	29.38	26.00	21.00	-	26.00	26.00	25.00	25.25	20.00
Part-Time	Not STAR Rated	25.25	18.20	18.25	24.50	21.00	-	27.50	27.25	28.00
	STAR Rated	25.00	20.68	16.00	-	-	-	18.00	19.50	20.00
Buffalo Trace		Type I			Type II			Certified Home		
		0 – 24 mos	2 – 4 yrs	5 yrs +	0 – 24 mos	2 – 4 yrs	5 yrs +	0 – 24 mos	2 – 4 yrs	5 yrs +
Full-Time	Not STAR Rated	21.25	18.75	27.50	25.00	17.00	10.00	20.00	20.00	20.00
	STAR Rated	19.00	16.00	16.00	18.00	18.00	-	-	-	-
Part-Time	Not STAR Rated	20.00	20.00	12.00	21.00	21.00	15.00	10.00	10.00	-
	STAR Rated	13.00	50.00	-	-	-	-	-	-	-
Cumberland Valley		Type I			Type II			Certified Home		
		0 – 24 mos	2 – 4 yrs	5 yrs +	0 – 24 mos	2 – 4 yrs	5 yrs +	0 – 24 mos	2 – 4 yrs	5 yrs +
Full-Time	Not STAR Rated	20.00	19.75	19.50	19.00	16.00	16.00	18.88	17.25	18.00
	STAR Rated	21.25	20.00	18.00	19.00	19.00	17.00	19.50	18.00	17.00
Part-Time	Not STAR Rated	15.25	14.75	14.00	13.00	11.00	-	14.00	12.00	11.00
	STAR Rated	24.00	20.00	12.75	17.00	17.00	-	14.00	12.00	10.00

Table A. 7. Rates by Area Development District and STAR Rated (75th Percentile) (continued)

Full-Time										
Fivco		Type I			Type II			Certified Home		
		0 – 24 mos	2 – 4 yrs	5 yrs +	0 – 24 mos	2 – 4 yrs	5 yrs +	0 – 24 mos	2 – 4 yrs	5 yrs +
Full-Time	Not STAR Rated	20.00	20.00	25.00	20.00	20.00	20.00	18.00	18.00	-
	STAR Rated	24.00	22.00	20.75				22.50	22.00	22.00
Part-Time	Not STAR Rated	19.25	17.00	20.00	-	-	-	14.00	14.00	-
	STAR Rated	19.00	17.50	-				18.00	18.00	18.00
Gateway		Type I			Type II			Certified Home		
		0 – 24 mos	2 – 4 yrs	5 yrs +	0 – 24 mos	2 – 4 yrs	5 yrs +	0 – 24 mos	2 – 4 yrs	5 yrs +
Full-Time	Not STAR Rated	23.13	18.50	18.00	18.00	18.00	16.00	19.50	19.00	20.00
	STAR Rated	22.50	19.00	17.00	-	-	-	18.00	18.00	-
Part-Time	Not STAR Rated	17.00	15.00	11.00	-	-	-	-	-	-
	STAR Rated	18.00	15.00	9.00	-	-	-	-	-	-
Green River		Type I			Type II			Certified Home		
		0 – 24 mos	2 – 4 yrs	5 yrs +	0 – 24 mos	2 – 4 yrs	5 yrs +	0 – 24 mos	2 – 4 yrs	5 yrs +
Full-Time	Not STAR Rated	24.00	22.00	19.00	19.00	19.00	-	23.75	23.50	20.00
	STAR Rated	22.88	20.85	17.00	-	22.00	22.00			
Part-Time	Not STAR Rated	22.50	20.00	25.00	-	-	-	15.00	15.00	-
	STAR Rated	30.00	20.00	11.00	-	18.00	-			
Kentucky River		Type I			Type II			Certified Home		
		0 – 24 mos	2 – 4 yrs	5 yrs +	0 – 24 mos	2 – 4 yrs	5 yrs +	0 – 24 mos	2 – 4 yrs	5 yrs +
Full-Time	Not STAR Rated	20.38	20.00	15.00	-	-	-	25.00	25.00	16.00
	STAR Rated	20.90	20.00	20.00	-	-	-	20.00	17.00	17.00
Part-Time	Not STAR Rated	15.75	14.32	11.00	-	-	-	14.00	12.00	12.00
	STAR Rated	16.00	16.00	15.00	-	-	-	17.00	15.00	-
KIPDA		Type I			Type II			Certified Home		
		0 – 24 mos	2 – 4 yrs	5 yrs +	0 – 24 mos	2 – 4 yrs	5 yrs +	0 – 24 mos	2 – 4 yrs	5 yrs +
Full-Time	Not STAR Rated	31.88	29.00	24.00	27.00	25.00	25.00	25.00	23.00	20.00
	STAR Rated	35.00	30.00	24.00	24.50	24.00	24.00	24.25	22.25	20.00
Part-Time	Not STAR Rated	30.00	25.40	25.00	25.00	23.75	32.00	20.00	18.00	27.00
	STAR Rated	30.00	25.00	20.00	20.00	19.00	17.00	20.00	19.50	20.00

Table A. 8. Rates by Area Development District and STAR Rated (75th Percentile) (continued)

Full-Time										
Lake Cumberland		Type I			Type II			Certified Home		
		0 – 24 mos	2 – 4 yrs	5 yrs +	0 – 24 mos	2 – 4 yrs	5 yrs +	0 – 24 mos	2 – 4 yrs	5 yrs +
Full-Time	Not STAR Rated	22.00	20.00	20.00	25.00	22.00	20.00	17.13	16.00	15.75
	STAR Rated	24.50	22.00	21.00	24.50	24.25	25.00	23.00	21.50	19.88
Part-Time	Not STAR Rated	16.50	14.50	10.00	19.00	16.00	-	16.50	15.00	-
	STAR Rated	18.50	15.00	13.00	15.75	15.00	25.00	17.00	15.00	-
Lincoln Trail		Type I			Type II			Certified Home		
		0 – 24 mos	2 – 4 yrs	5 yrs +	0 – 24 mos	2 – 4 yrs	5 yrs +	0 – 24 mos	2 – 4 yrs	5 yrs +
Full-Time	Not STAR Rated	22.69	20.00	18.00	19.75	18.75	17.50	19.50	18.25	17.75
	STAR Rated	23.50	20.00	20.00	20.00	20.00	20.00	19.50	17.00	15.00
Part-Time	Not STAR Rated	20.00	16.00	15.00	-	20.00	20.00	15.00	13.00	16.00
	STAR Rated	19.00	15.41	15.50	-	-	-	37.00	25.00	-
Northern Kentucky		Type I			Type II			Certified Home		
		0 – 24 mos	2 – 4 yrs	5 yrs +	0 – 24 mos	2 – 4 yrs	5 yrs +	0 – 24 mos	2 – 4 yrs	5 yrs +
Full-Time	Not STAR Rated	32.80	29.25	25.00	25.00	25.00	-	29.50	28.00	23.00
	STAR Rated	35.40	31.00	30.50	-	-	-	28.75	27.00	25.00
Part-Time	Not STAR Rated	35.00	31.00	24.50	-	-	-	34.50	36.50	35.00
	STAR Rated	28.00	27.00	15.75	-	-	-	20.00	22.75	19.00
Pennyriple		Type I			Type II			Certified Home		
		0 – 24 mos	2 – 4 yrs	5 yrs +	0 – 24 mos	2 – 4 yrs	5 yrs +	0 – 24 mos	2 – 4 yrs	5 yrs +
Full-Time	Not STAR Rated	22.00	20.00	19.50	20.00	20.00	25.00	18.00	18.00	18.00
	STAR Rated	23.25	20.00	18.00	20.50	20.00	20.00	21.75	19.25	18.00
Part-Time	Not STAR Rated	20.00	16.00	15.00	25.00	25.00	5.00	16.75	16.00	12.00
	STAR Rated	25.00	21.00	25.00	17.00	23.00	15.00	19.25	15.75	15.00
Purchase		Type I			Type II			Certified Home		
		0 – 24 mos	2 – 4 yrs	5 yrs +	0 – 24 mos	2 – 4 yrs	5 yrs +	0 – 24 mos	2 – 4 yrs	5 yrs +
Full-Time	Not STAR Rated	25.00	25.00	22.00	23.00	20.00	-	24.50	24.00	24.00
	STAR Rated	23.00	23.00	22.25	-	-	-	20.00	20.00	19.00
Part-Time	Not STAR Rated	23.00	22.00	15.00	14.00	14.00	-	10.00	12.00	-
	STAR Rated	21.00	20.75	23.75	12.00	-	-	-	10.00	-

Table A. 9. Rates by Area Development District and Subsidy Acceptance (75th Percentile)

Full-Time										
Barren River		Type I			Type II			Certified Home		
		0 – 24 mos	2 – 4 yrs	5 yrs +	0 – 24 mos	2 – 4 yrs	5 yrs +	0 – 24 mos	2 – 4 yrs	5 yrs +
Full-Time	No Subsidy	20.00	22.00	22.00	-	-	-	16.00	16.00	14.00
	Accepts Subsidy	24.00	23.00	19.75	18.00	16.00	16.50	19.00	19.00	20.50
Part-Time	No Subsidy	14.00	14.60	-	-	-	-	-	-	-
	Accepts Subsidy	19.00	17.00	8.00	15.00	18.75	-	15.00	12.00	12.00
Big Sandy										
		0 – 24 mos	2 – 4 yrs	5 yrs +	0 – 24 mos	2 – 4 yrs	5 yrs +	0 – 24 mos	2 – 4 yrs	5 yrs +
Full-Time	No Subsidy	14.00	14.00	14.00	-	-	-	-	-	-
	Accepts Subsidy	30.00	26.25	19.75	19.00	18.00	15.00	24.50	23.75	25.00
Part-Time	No Subsidy	16.00	16.00	-	-	-	-	-	-	-
	Accepts Subsidy	24.25	24.00	15.00	14.00	13.00	-	18.00	16.50	15.00
Bluegrass										
		0 – 24 mos	2 – 4 yrs	5 yrs +	0 – 24 mos	2 – 4 yrs	5 yrs +	0 – 24 mos	2 – 4 yrs	5 yrs +
Full-Time	No Subsidy	35.20	28.27	23.82	32.00	32.00	-	28.50	28.75	28.00
	Accepts Subsidy	30.00	26.25	21.00	26.25	24.75	25.00	26.00	25.00	25.00
Part-Time	No Subsidy	19.50	10.55	13.00	-	-	-	28.00	28.00	28.00
	Accepts Subsidy	25.00	20.00	16.00	24.50	21.00	-	23.50	25.00	20.00
Buffalo Trace										
		0 – 24 mos	2 – 4 yrs	5 yrs +	0 – 24 mos	2 – 4 yrs	5 yrs +	0 – 24 mos	2 – 4 yrs	5 yrs +
Full-Time	No Subsidy	-	16.00	-	-	-	-	-	-	-
	Accepts Subsidy	20.00	18.75	25.00	23.25	17.75	10.00	20.00	20.00	20.00
Part-Time	No Subsidy	-	-	-	-	-	-	-	-	-
	Accepts Subsidy	20.00	20.00	12.00	21.00	21.00	15.00	10.00	10.00	-
Cumberland Valley										
		0 – 24 mos	2 – 4 yrs	5 yrs +	0 – 24 mos	2 – 4 yrs	5 yrs +	0 – 24 mos	2 – 4 yrs	5 yrs +
Full-Time	No Subsidy	-	15.40	-	-	-	-	-	-	-
	Accepts Subsidy	20.50	20.00	18.75	19.00	19.00	17.00	18.88	17.25	17.25
Part-Time	No Subsidy	2.00	10.52	-	-	-	-	-	-	-
	Accepts Subsidy	16.75	15.75	14.00	17.00	17.00	-	14.00	12.00	11.00
Fivco										
		0 – 24 mos	2 – 4 yrs	5 yrs +	0 – 24 mos	2 – 4 yrs	5 yrs +	0 – 24 mos	2 – 4 yrs	5 yrs +
Full-Time	No Subsidy	-	10.00	-	-	-	-	-	-	-
	Accepts Subsidy	23.13	20.00	24.25	20.00	20.00	20.00	22.38	21.50	22.00
Part-Time	No Subsidy	-	20.00	-	-	-	-	-	-	-
	Accepts Subsidy	18.50	17.00	20.00	-	-	-	18.00	18.00	18.00

Table A. 10. Rates by Area Development District and Subsidy Acceptance (75th Percentile) (continued)

Full-Time										
Gateway		Type I			Type II			Certified Home		
		0 – 24 mos	2 – 4 yrs	5 yrs +	0 – 24 mos	2 – 4 yrs	5 yrs +	0 – 24 mos	2 – 4 yrs	5 yrs +
Full-Time	No Subsidy	-	-	-	-	-	-	19.00	18.00	20.00
	Accepts Subsidy	22.88	18.75	18.00	18.00	18.00	16.00	19.50	19.00	18.00
Part-Time	No Subsidy	-	-	-	-	-	-	-	-	-
	Accepts Subsidy	18.00	15.00	10.75	-	-	-	-	-	-
Green River										
		Type I			Type II			Certified Home		
		0 – 24 mos	2 – 4 yrs	5 yrs +	0 – 24 mos	2 – 4 yrs	5 yrs +	0 – 24 mos	2 – 4 yrs	5 yrs +
Full-Time	No Subsidy	-	46.00	19.00	-	-	-	22.50	-	-
	Accepts Subsidy	23.00	21.80	18.00	19.00	22.00	22.00	23.75	23.50	20.00
Part-Time	No Subsidy	-	18.50	-	-	-	-	-	-	-
	Accepts Subsidy	23.75	20.00	21.25	-	18.00	-	15.00	15.00	-
Kentucky River										
		Type I			Type II			Certified Home		
		0 – 24 mos	2 – 4 yrs	5 yrs +	0 – 24 mos	2 – 4 yrs	5 yrs +	0 – 24 mos	2 – 4 yrs	5 yrs +
Full-Time	No Subsidy	23.60	20.00	20.00	-	-	-	-	-	-
	Accepts Subsidy	20.00	20.00	14.75	-	-	-	23.75	23.00	17.00
Part-Time	No Subsidy	7.00	8.00	15.00	-	-	-	-	-	-
	Accepts Subsidy	16.00	16.00	11.00	-	-	-	17.00	15.00	12.00
KIPDA										
		Type I			Type II			Certified Home		
		0 – 24 mos	2 – 4 yrs	5 yrs +	0 – 24 mos	2 – 4 yrs	5 yrs +	0 – 24 mos	2 – 4 yrs	5 yrs +
Full-Time	No Subsidy	38.00	30.95	25.67	-	-	-	35.00	38.00	-
	Accepts Subsidy	31.50	29.20	24.00	25.50	25.00	24.25	24.75	22.00	20.00
Part-Time	No Subsidy	23.00	16.91	-	-	-	-	-	-	-
	Accepts Subsidy	30.00	25.95	25.00	23.75	20.00	30.25	20.00	18.00	25.25
Lake Cumberland										
		Type I			Type II			Certified Home		
		0 – 24 mos	2 – 4 yrs	5 yrs +	0 – 24 mos	2 – 4 yrs	5 yrs +	0 – 24 mos	2 – 4 yrs	5 yrs +
Full-Time	No Subsidy	-	19.00	-	-	-	-	16.00	16.00	12.00
	Accepts Subsidy	23.00	21.00	20.00	25.00	22.00	21.50	19.00	17.25	17.31
Part-Time	No Subsidy	-	17.00	5.00	-	-	-	-	-	-
	Accepts Subsidy	17.50	15.00	12.00	18.00	15.25	25.00	17.00	15.00	-
Lincoln Trail										
		Type I			Type II			Certified Home		
		0 – 24 mos	2 – 4 yrs	5 yrs +	0 – 24 mos	2 – 4 yrs	5 yrs +	0 – 24 mos	2 – 4 yrs	5 yrs +
Full-Time	No Subsidy	-	16.00	8.40	18.00	18.00	18.00	-	-	-
	Accepts Subsidy	23.00	20.00	19.50	20.00	20.00	19.00	19.50	18.00	17.50
Part-Time	No Subsidy	-	24.00	10.00	-	-	-	-	-	-
	Accepts Subsidy	19.75	16.00	15.00	-	20.00	20.00	31.50	19.00	16.00

Table A. 11. Rates by Area Development District and Subsidy Acceptance (75th Percentile) (continued)

Full-Time										
Northern Kentucky		Type I			Type II			Certified Home		
		0 – 24 mos	2 – 4 yrs	5 yrs +	0 – 24 mos	2 – 4 yrs	5 yrs +	0 – 24 mos	2 – 4 yrs	5 yrs +
Full-Time	No Subsidy	23.00	22.50	19.80	-	-	-	29.75	30.25	31.00
	Accepts Subsidy	34.50	30.60	26.75	25.00	25.00	-	28.50	27.00	23.50
Part-Time	No Subsidy	7.00	35.25	24.00	-	-	-	19.00	-	-
	Accepts Subsidy	35.00	30.00	21.25	-	-	-	29.00	27.25	23.75
Pennyrile										
		0 – 24 mos	2 – 4 yrs	5 yrs +	0 – 24 mos	2 – 4 yrs	5 yrs +	0 – 24 mos	2 – 4 yrs	5 yrs +
Full-Time	No Subsidy	-	20.00	-	-	-	-	-	-	-
	Accepts Subsidy	22.50	20.00	19.00	20.50	20.00	23.75	20.00	19.00	18.00
Part-Time	No Subsidy	-	9.80	-	-	-	-	-	-	-
	Accepts Subsidy	24.00	16.75	17.00	25.00	25.00	15.00	17.00	16.00	14.50
Purchase										
		0 – 24 mos	2 – 4 yrs	5 yrs +	0 – 24 mos	2 – 4 yrs	5 yrs +	0 – 24 mos	2 – 4 yrs	5 yrs +
Full-Time	No Subsidy	19.00	21.50	22.00	20.00	20.00	-	24.50	24.00	24.00
	Accepts Subsidy	25.00	25.00	22.00	23.00	-	-	20.00	20.00	18.00
Part-Time	No Subsidy	14.00	14.25	12.00	-	-	-	12.00	12.00	-
	Accepts Subsidy	22.50	22.25	22.50	14.00	14.00	-	10.00	10.00	-

Appendix 4: Figures

Figure 2. Type I Infant/Toddler Trend 2005-2009, Full-Time Rates (75th Percentile)

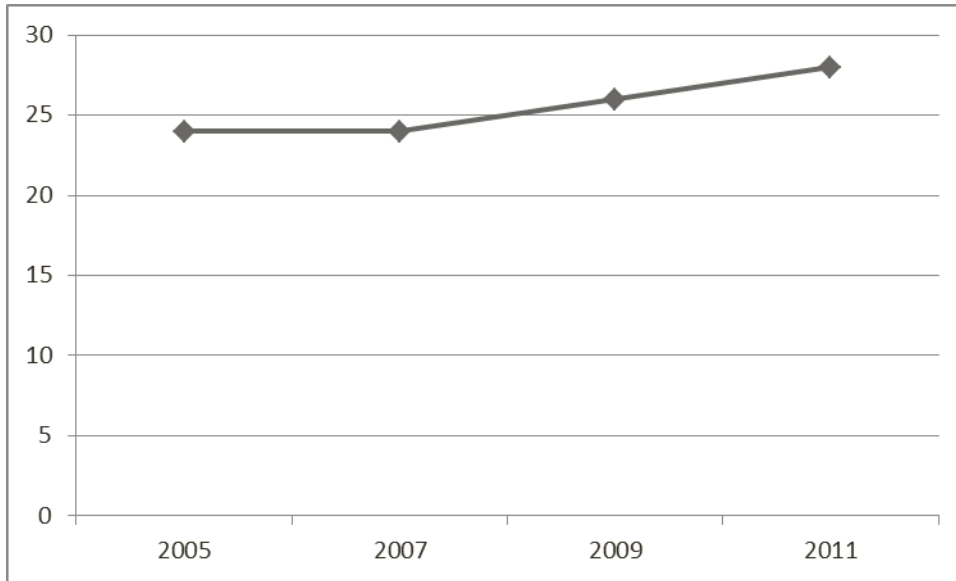


Figure 3. Type I Preschool Trend 2005-2009, Full-Time Rates (75th Percentile)

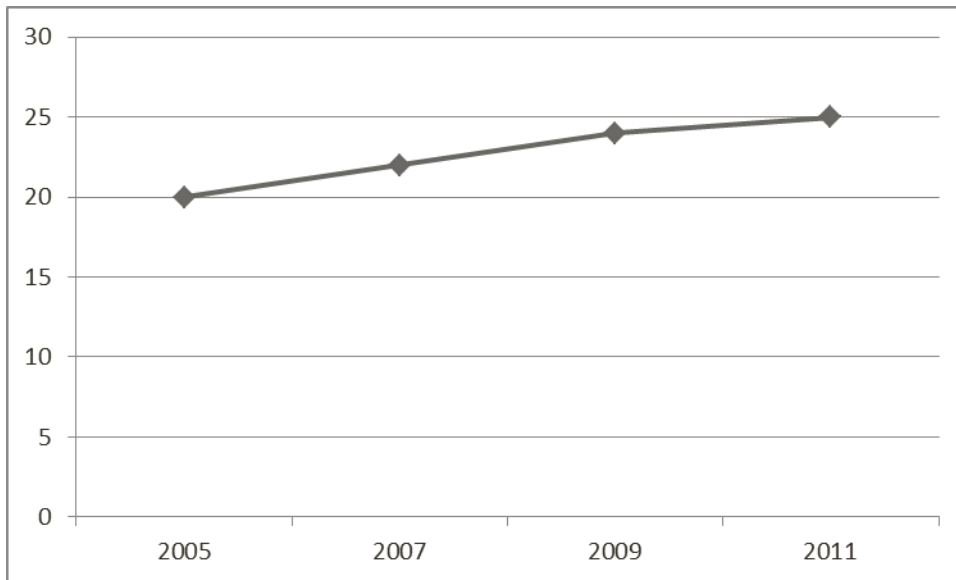


Figure 4. Type I School-Age Trend 2005-2009, Full-Time Rates (75th Percentile)

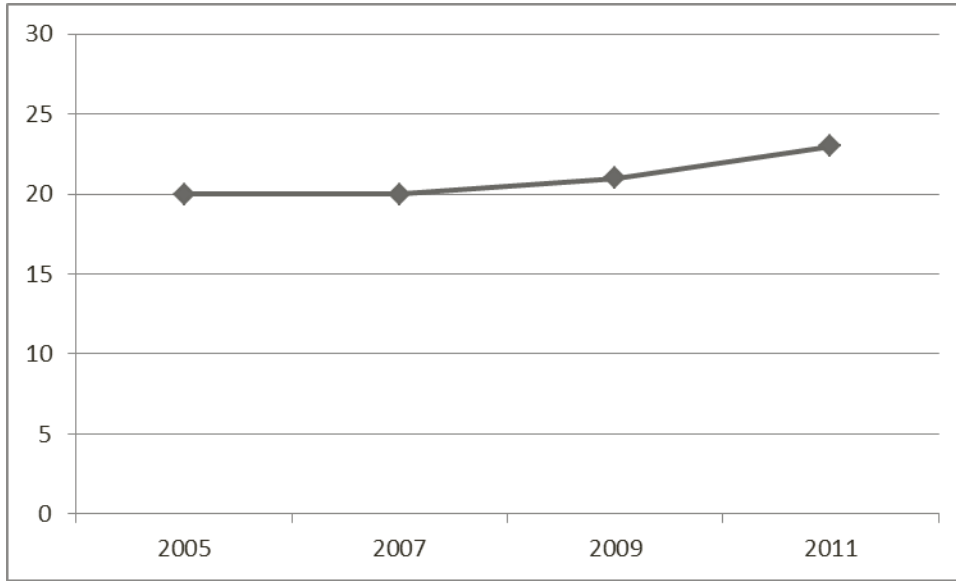


Figure 5. Type II Infant/Toddler Trend 2005-2009, Full-Time Rates (75th Percentile)

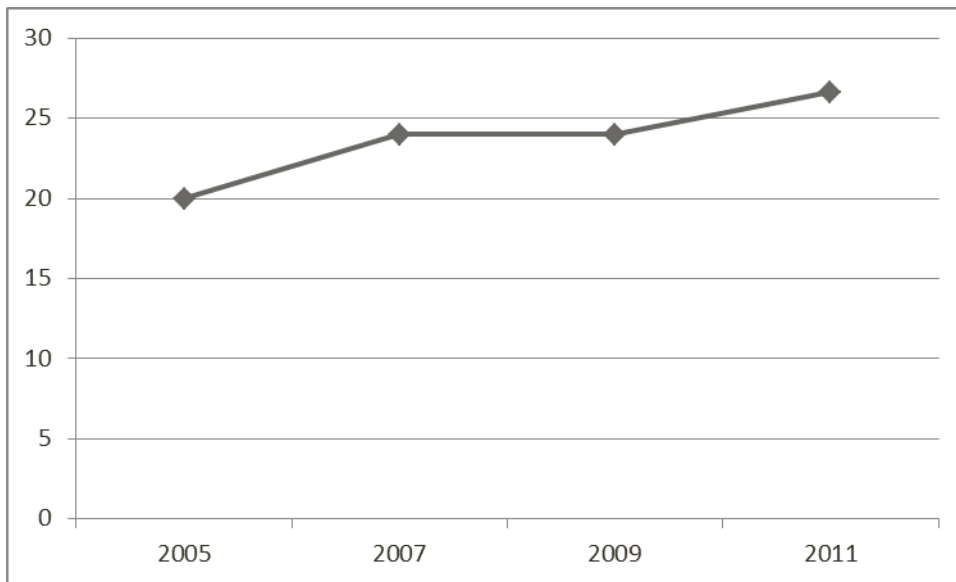


Figure 6. Type II Preschool Trend 2005-2009, Full-Time Rates (75th Percentile)

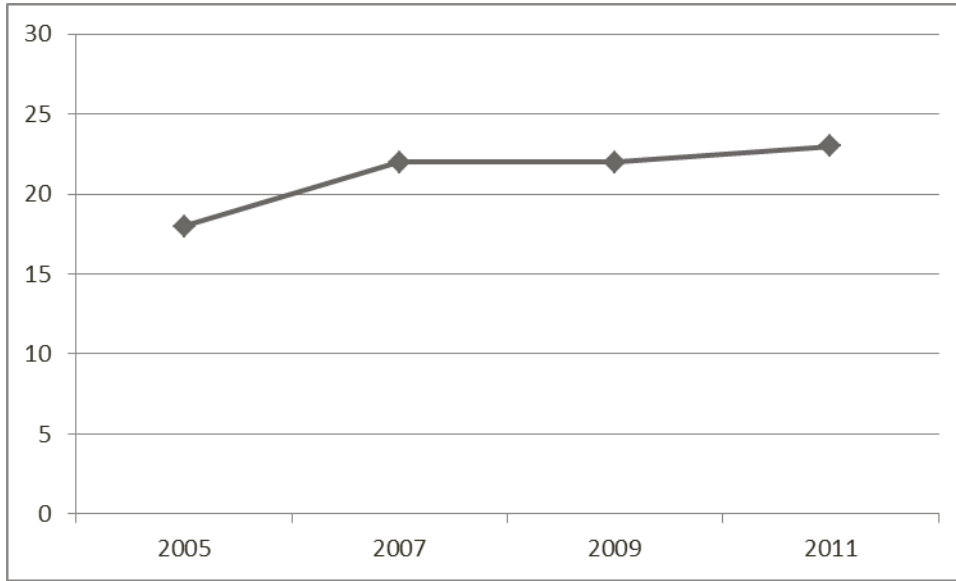


Figure 7. Type II School-Age Trend 2005-2009, Full-Time Rates (75th Percentile)

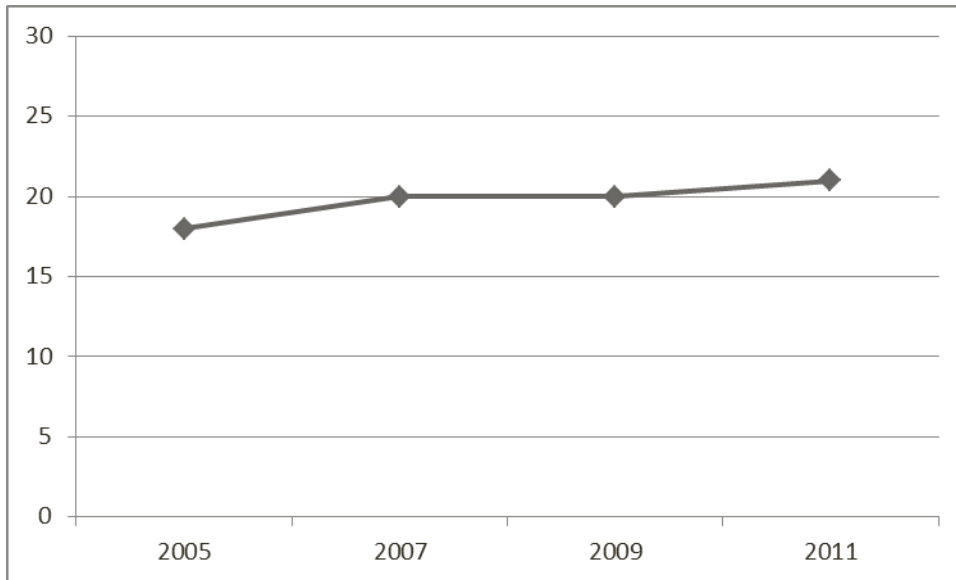


Figure 8. Certified Home Infant/Toddler Trend 2005-2009, Full-Time Rates (75th Percentile)

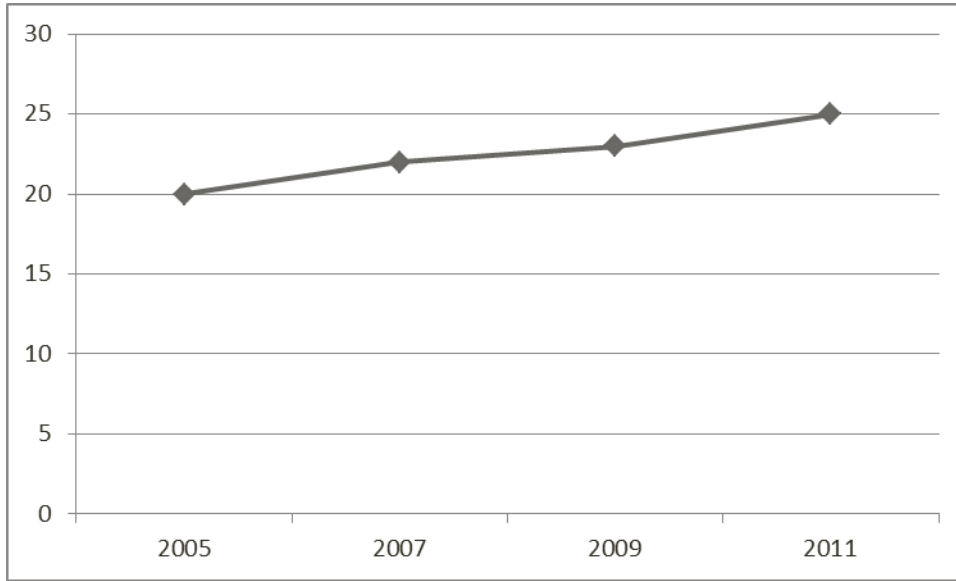


Figure 9. Certified Home Preschool Trend 2005-2009, Full-Time Rates (75th Percentile)

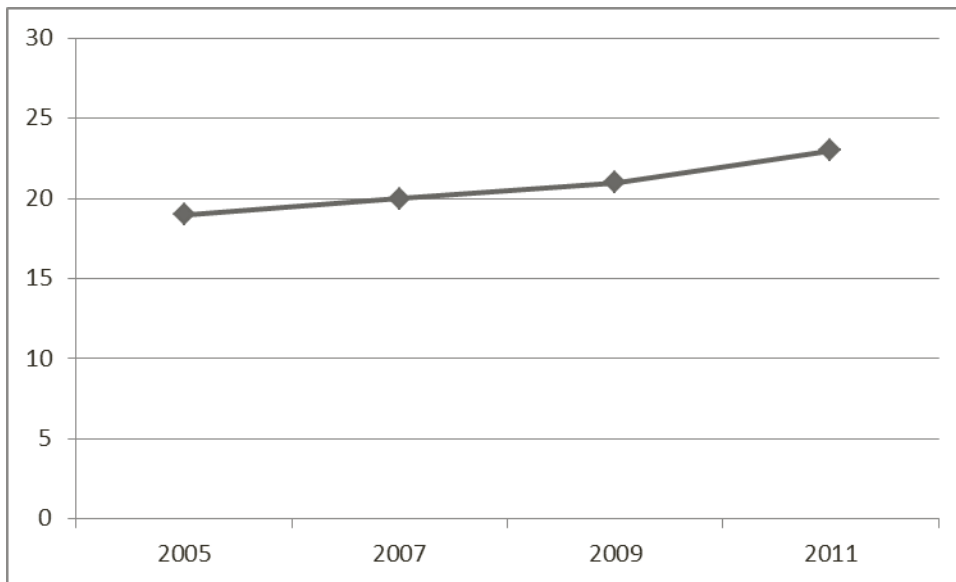


Figure 10. Certified Home School-Age Trend 2005-2009, Full-Time Rates (75th Percentile)

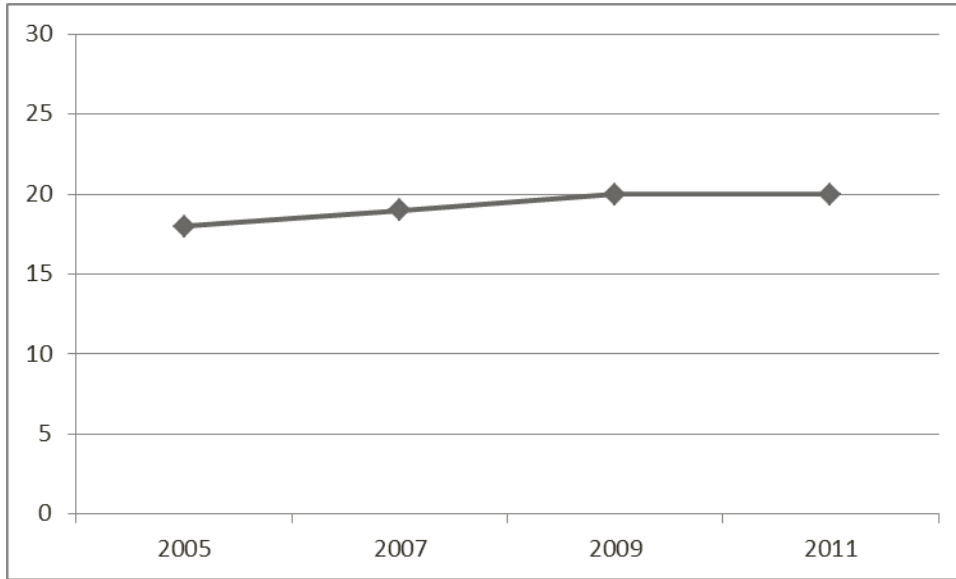


Figure 11. Type I Infant/Toddler Trend 2005-2009, Part-Time Rates (75th Percentile)

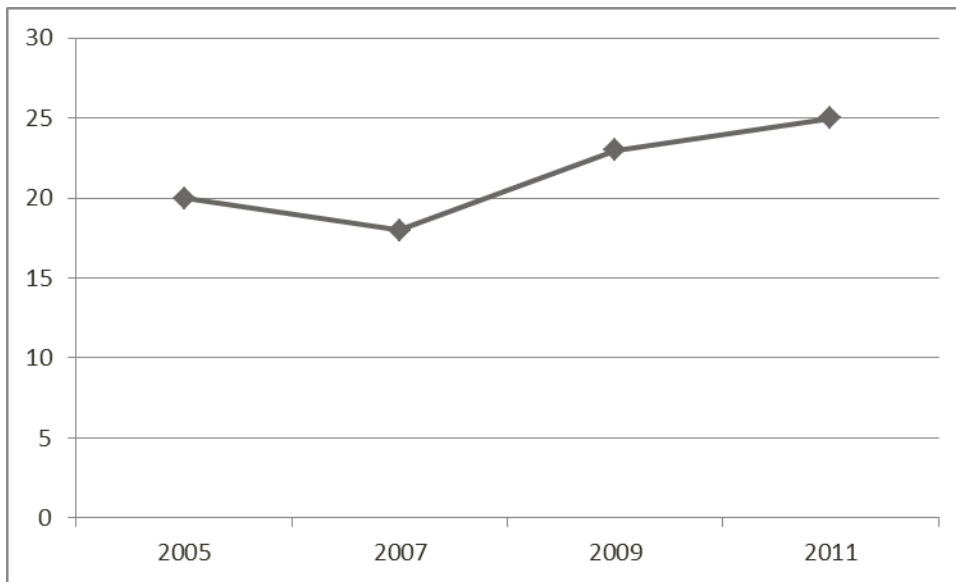


Figure 12. Type I Preschool Trend 2005-2009, Part-Time Rates (75th Percentile)

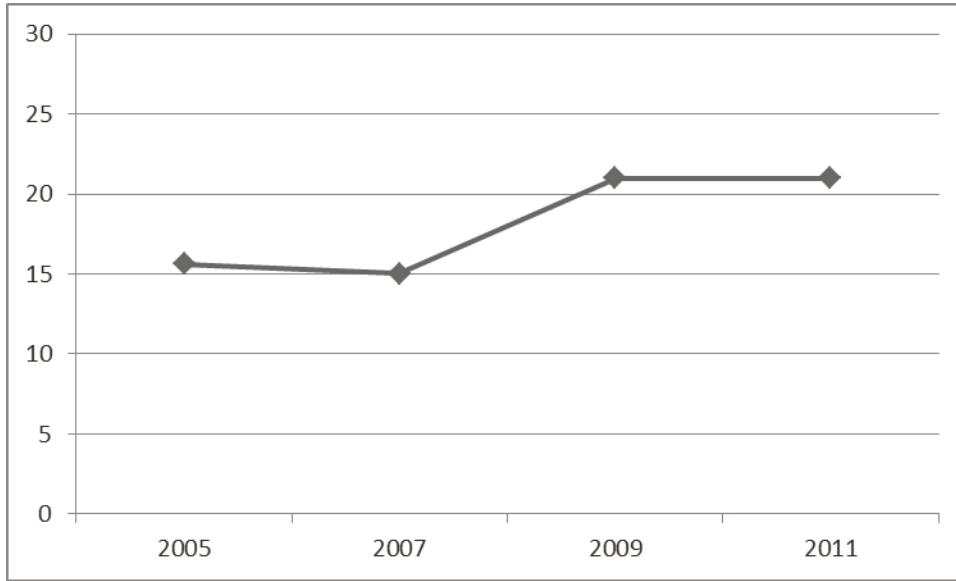


Figure 13. Type I School-Age Trend 2005-2009, Part-Time Rates (75th Percentile)

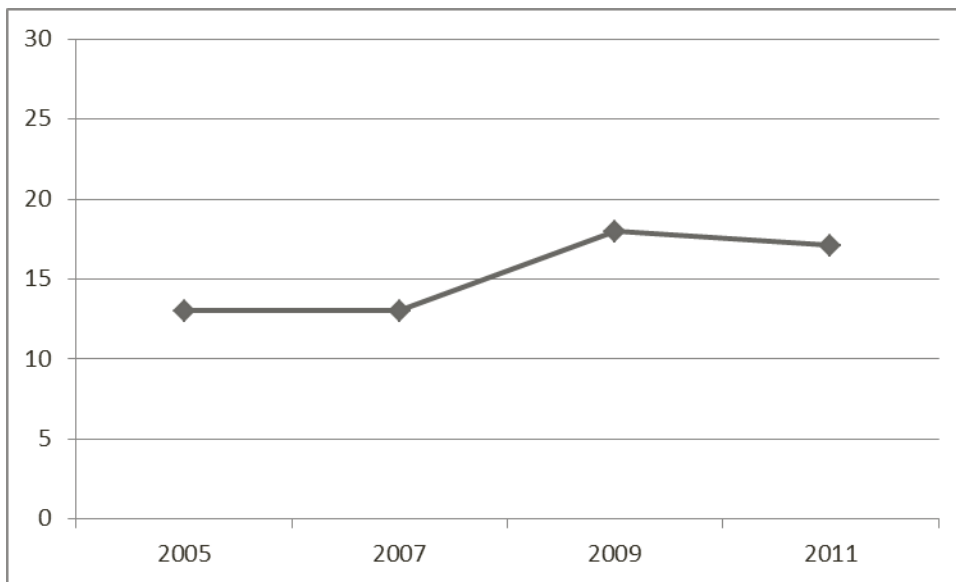


Figure 14. Type II Infant/Toddler Trend 2005-2009, Part-Time Rates (75th Percentile)

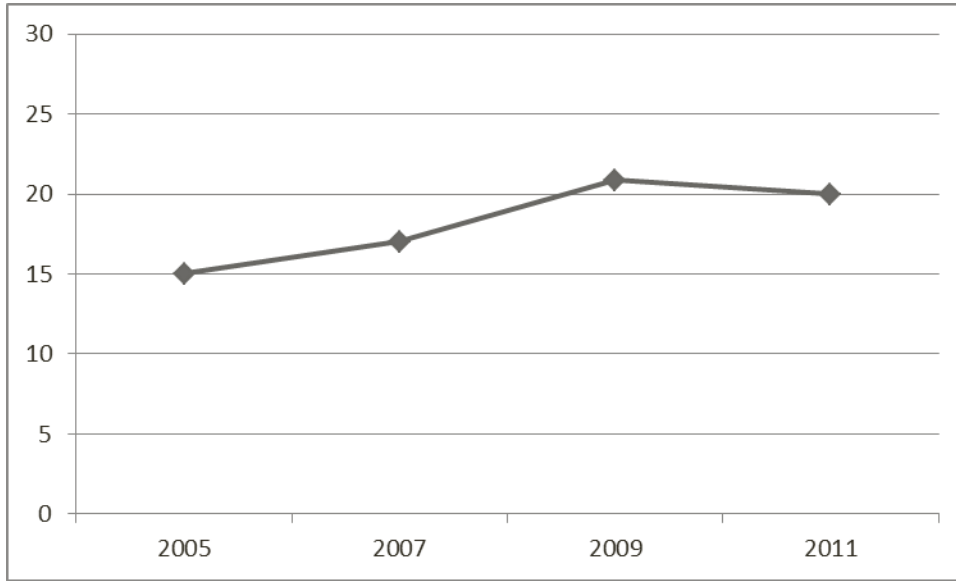


Figure 15. Type II Preschool Trend 2005-2009, Part-Time Rates (75th Percentile)

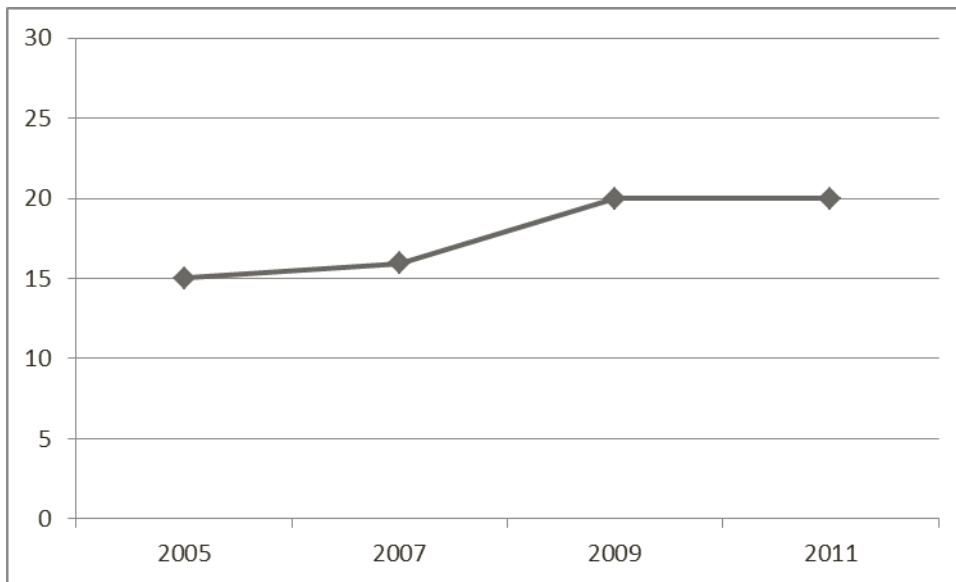


Figure 16. Type II School-Age Trend 2005-2009, Part-Time Rates (75th Percentile)

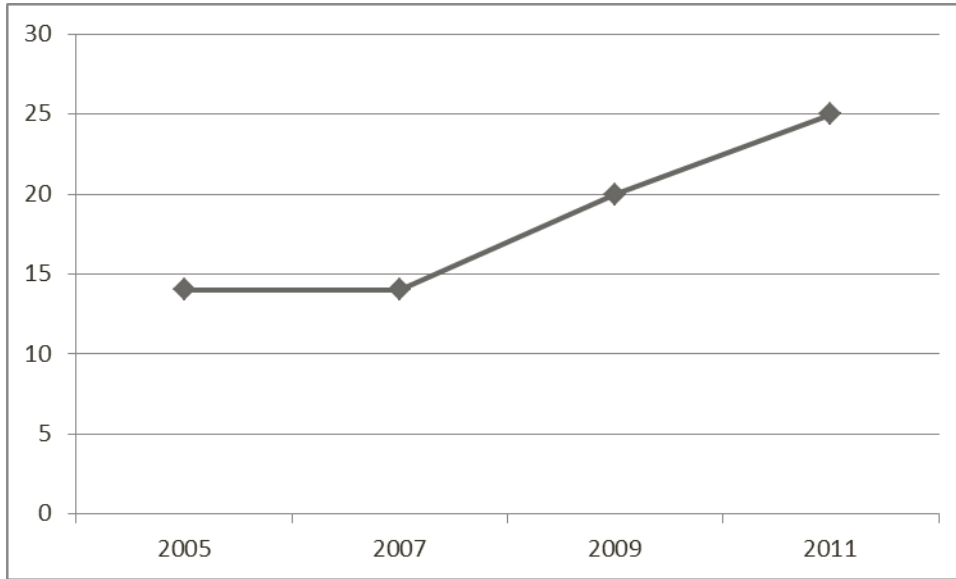


Figure 17. Certified Home Infant/Toddler Trend 2005-2009, Part-Time Rates (75th Percentile)

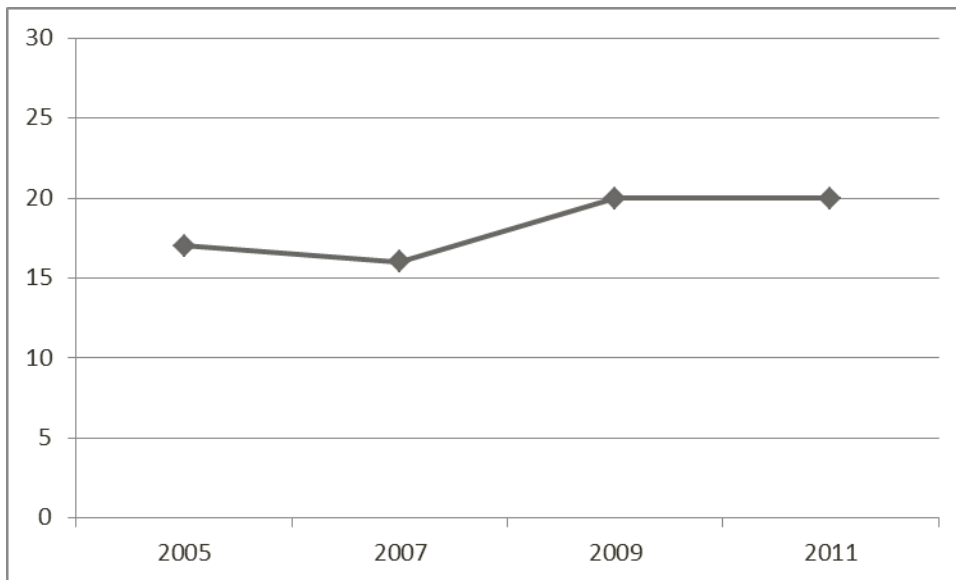


Figure 18. Certified Home Preschool Trend 2005-2009, Part-Time Rates (75th Percentile)

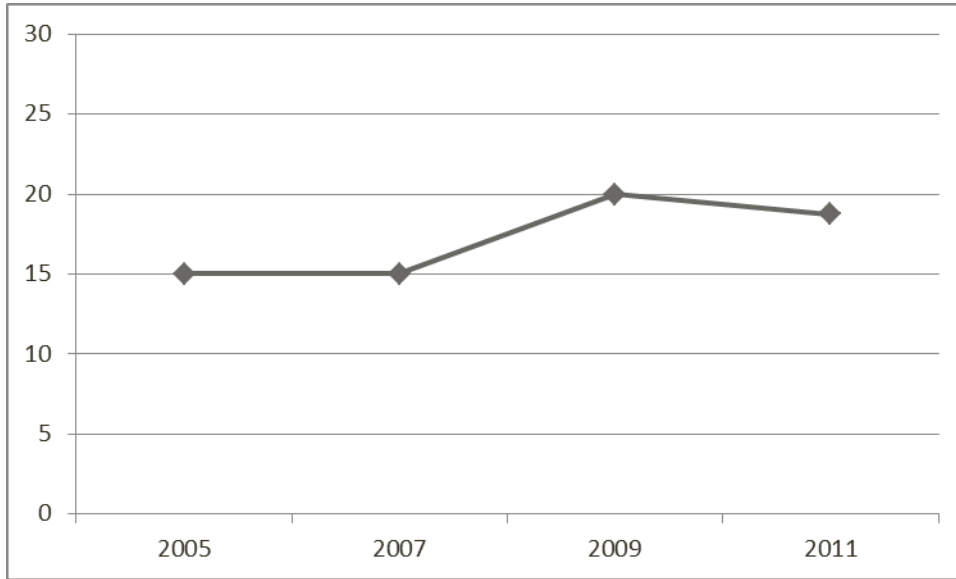
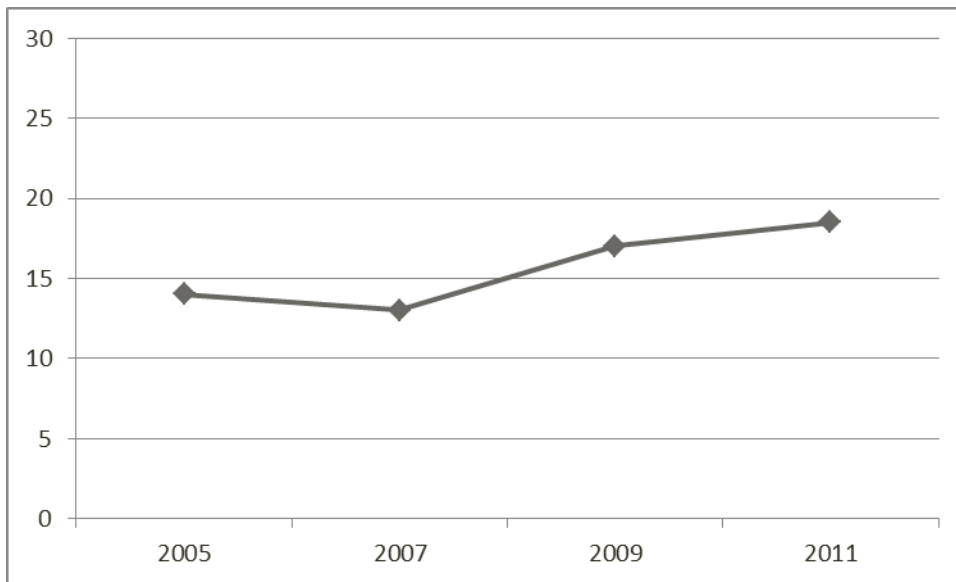


Figure 19. Certified Home School-Age Trend 2005-2009, Part-Time Rates (75th Percentile)



References

Dillman, D.A., Smyth, J.D. & Christian, L.M. (2009). *Internet, mail, and mixed-mode surveys: The tailored design method. 3rd Edition*. Hobokon, NJ: John Wiley & Sons. [ISBN 978-0-471-69868-5 cloth]

Grobe, D., R. Weber, et al. (2003). "Market rate study guidebook: A guide to implementing a child care market rate study using child care resource and referral data."

A guide to conducting state child care market rate surveys using data from child care resource and referral databases